

eXpert 7600 Series Universal Testing Systems

System Brochure



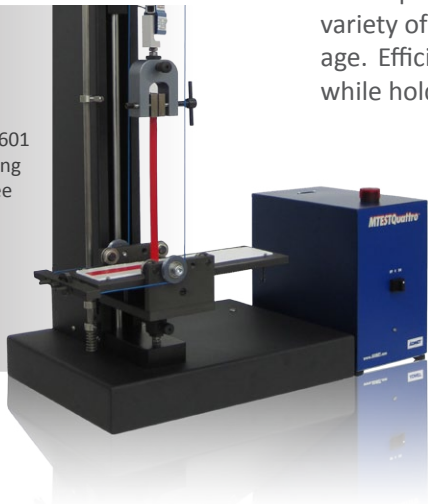
eXpert 7600 Series Universal Testing Systems

Efficiency, Flexibility and Performance.

Single column Universal Testing Machines for users who want the flexibility and reliability of a full-size system without the high cost or space requirements.

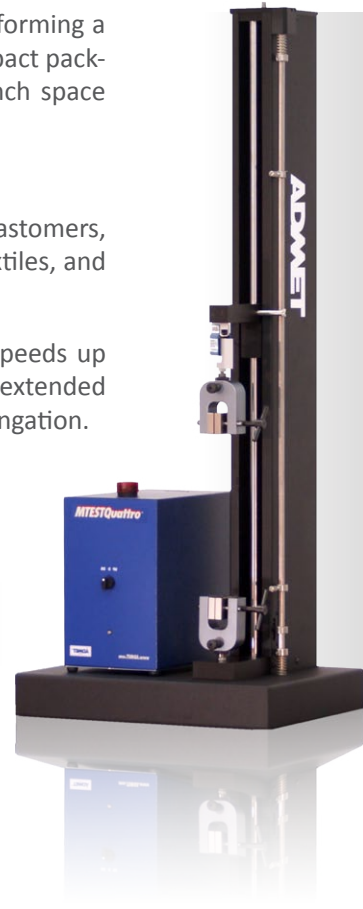
The eXpert 7600 series machines are capable of performing a variety of mechanical tests in an affordable and compact package. Efficient in design, units fit within a 16 x 12 inch space while holding a force capacity of up to 5kN.

eXpert 7601 performing 90-degree peel test



- Test adhesives, biomaterials, elastomers, films, packaging, plastics, wires, textiles, and other materials with confidence.
- Test high elongation materials at speeds up to 2,540mm/min (100in/min). An extended height option adds 24 inches of elongation.

eXpert 7601 w/ manual vice grips



Customizable - Backed by superior engineering and a willingness to tailor a system to your testing needs.

Taller, shorter, wider, faster, slower: Our engineering group will configure a design to meet your specifications. A second actuator can also be added for performing biaxial tests.

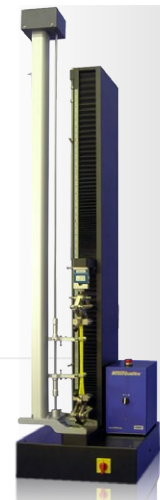
eXpert 7601 w/ eP2 performing compression test



Trusted - Expertly designed, engineered and supported for life.

- Exceeds all ASTM/ISO accuracy requirements.
- Fastest in the industry, an 8 kHz servo loop rate ensures accurate, repeatable, and reliable testing.
- All testing systems are supported for life.

eXpert7603 w/ long-travel extensometer



Test with Certainty.

eXpert 7600 Series Universal Testing Systems

Efficiency, Flexibility and Performance.

System Specifications

Model		7601 Table Top	7601 XLT Table Top	7602 Table Top	7603 Table Top
Load Capacity	lbf	225	225	500	1,000
	kN	1	1	2.5	5
	kgf	100	100	250	500
Maximum Speed	in/min	40	40	100	50
	mm/min	1,016	1,016	2,540	1,270
Minimum Speed	in/min	0.0005	0.0005	0.0002	0.0001
	mm/min	0.012	0.012	0.005	0.0025
Maximum Force at Full Speed	lbf	175	175	450	900
	kN	0.75	0.75	2	4
Position Control Resolution	μin	4.2	4.2	24	12
	μm	0.107	0.107	0.61	0.308
Total Crosshead Travel ¹	in	29	53	41	41
	mm	735	1,345	1,041	1,041
Total Vertical Test Space ²	in	32	56	49	49
	mm	864	1,422	1,244	1,244
Lateral Test Space	in	3.4	3.4	3.44	3.44
	mm	87	87	87.4	87.4
Height	in	40	64	60	60
	mm	1,016	1,625	1,524	1,524
Width (Frame Only)	in	16	16	17	17
	mm	406	406	432	432
Depth	in	12	12	20.5	20.5
	mm	305	305	520	520
Weight	lbf	45	60	250	250
	kgf	20.5	28	114	114
Maximum Power	VA	100	100	300	300
Single Phase Voltage	VAC	100-240	100-240	100-240	110-220
	Hz	50,60	50,60	50,60	50,60



Notes:

1. Total crosshead travel is calculated without load cells, grips, and fixtures. Longer strokes can be accommodated by ordering an extended column frame.
2. Total Vertical Test Space is the distance from the top surface of the base platen to the bottom surface of the moving crosshead, excluding load cell, grips and fixtures. Larger openings can be accommodated by ordering an extended column frame.

Load Measurement Accuracy: +/- 0.5% of reading down to 1/100 of load cell capacity. Meets or exceeds ASTM E4, BSENIS 7500-1: 2004, DIN 51221 and JIS B7721 standards. ADMET self-identifying load cells are offered with all systems.

Strain Measurement Accuracy: +/- 0.5% of reading down to 1/50 of full scale with ASTM E83 class B extensometers. Meets or exceeds ASTM E83 and BSENISO9513: 2002 standards.



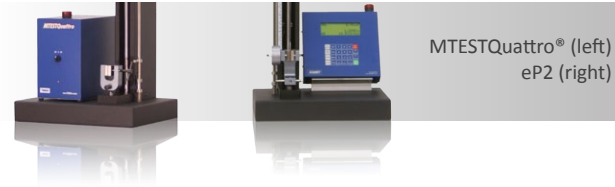
Test with ADMET.

eXpert 7600 Series Universal Testing Systems

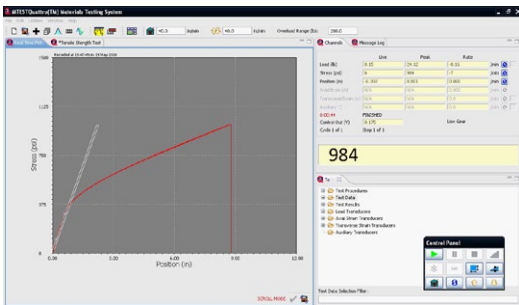
Efficiency, Flexibility and Performance.

Controls and Software

All ADMET Testing Machines can be equipped with one of two closed loop servo controllers. MTESTQuattro®, our most advanced testing system, is a PC-based unit that offers a wide range of flexibility in control, data acquisition, analysis, and reporting. The eP2 Digital Controller, a standalone touch panel unit, offers a balance between performance and simplicity. Both controllers feature 8 kHz servo update periods and programmable log rates to 1 kHz.



MTESTQuattro® (left)
eP2 (right)

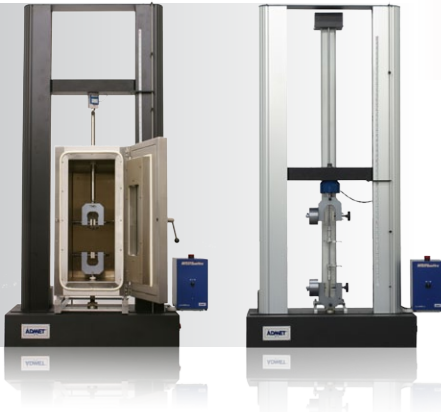


MTESTQuattro® running on Windows

Controller	MTESTQuattro®	eP2 Digital Controller
Interface	PC Software	Touch Panel
Analysis	Extensive calculations library w/ built-in ASTM/ISO specification analysis.	Standard calculation package for basic testing requirements and QC testing.
Test Procedures	Use built-in or create an unlimited number of simple to complex procedures.	Save up to six test procedures in eP2.
Reporting	Store and organize all data. View and print user customizable test reports with chart and tables.	Post test, view current results on eP2 screen and send data to PC for reporting using optional GaugeSafe software.

eXpert 2610
w/ environmental
chamber
(left)

eXpert 2611
w/ long-travel
extensometer
(right)



Accessories - Grips, environmental chambers, extensometers, baths, cutting tools and more.

Systems can be equipped with a variety of grips, fixtures, environmental chambers and temperature controlled baths to accommodate a wide range of testing requirements. For more accurate strain measurements, extensometers or deflectometers can be added to any ADMET testing System.



For more grips information, please visit <http://admet.com/grips.htm>

Service and Calibration

Training and Service - ADMET testing systems are easy to learn and use. We provide free introductory on-line training and, if needed, additional on-site training. Our manuals, tutorials, and trouble shooting guides are updated regularly. We provide free phone and email product support through the life of the system. ADMET's on-site service and calibration team includes over 100 individuals in over 40 locations in the USA.

Calibration - Customers can setup calibration contracts with ADMET or a private party. All services are A2LA accredited and meet ISO/IEC Guide 17025 and ANSI/NCSL Z540.



51 Morgan Drive Norwood, MA 02062
Tel: (781) 769-0850 Fax: (781) 769-0884
Sales@ADMET.com www.ADMET.com

www.ADMET.com