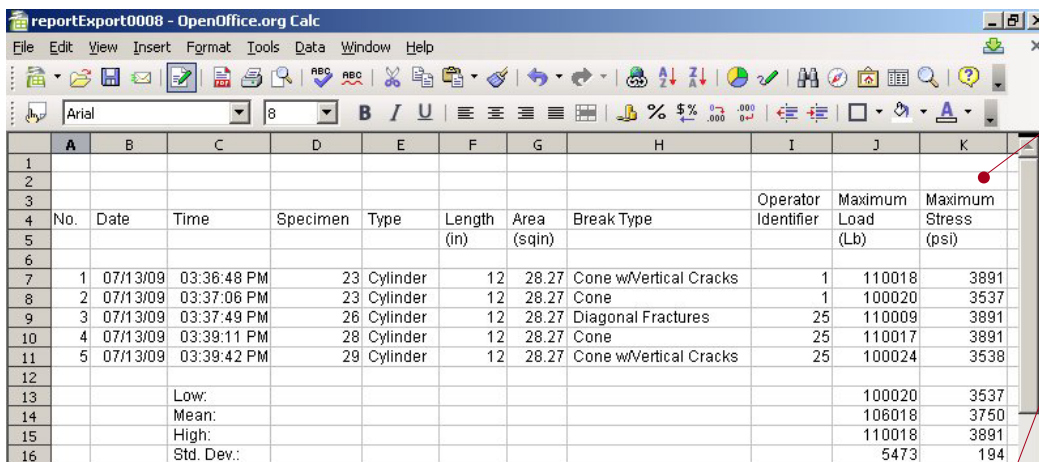


# GaugeSafe Data Exchange Program

Unlock the power of your ADMET controlled testing machine with GaugeSafe. The Windows XP/Vista compatible program will communicate with your ADMET testing system via a USB flash (thumb) drive or directly through a USB cable. GaugeSafe will:

- Create, store and upload test methods into your testing machine to ensure that identical tests are performed the same way each time.
- Display, print and store test results in tabular form from a group of like tests. Also included is a statistical summary for each calculated result.
- Eliminate data entry errors by exporting test results into common spreadsheet programs or corporate databases. Display, print and store XY plots. Great for verifying that a testing rate met ASTM standards.
- Display and print multiple curves on the same set of graph axes. Compare the test rates from a group of like tests.
- Backup and restore your testing machine force, position or strain calibrations. Minimizes downtime in the event of a failure.
- Display real-time XY plots and numerical values from active channels such as force, position, stress and strain.

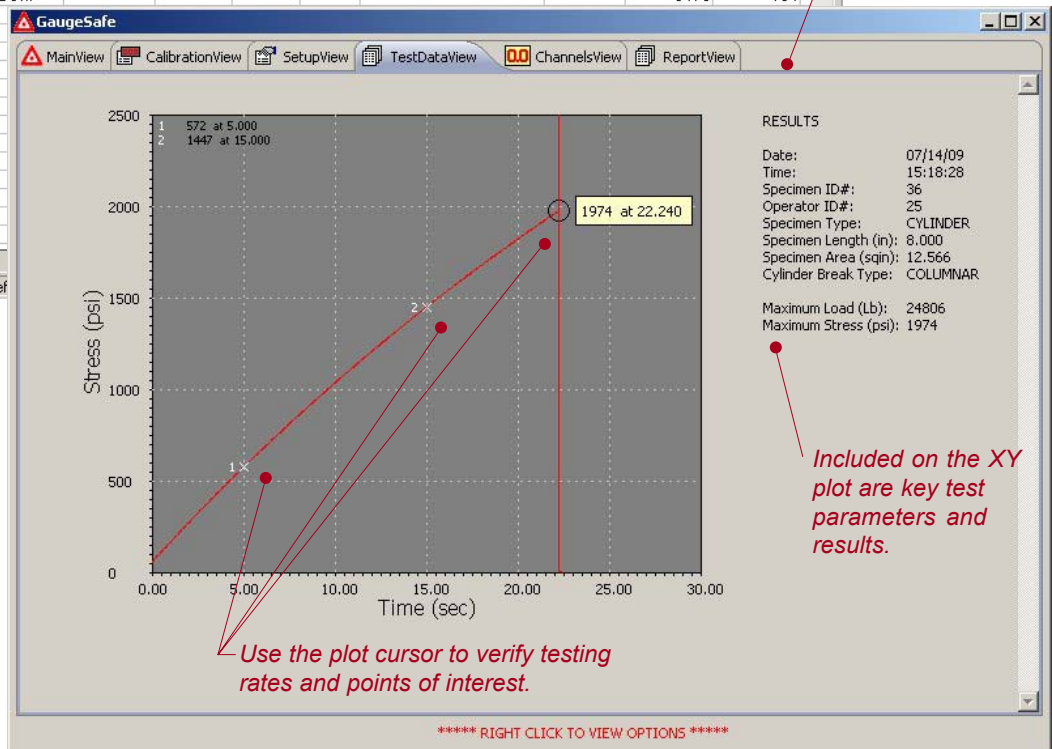
## Single and Group Test Reports



No.	Date	Time	Specimen	Type	Length (in)	Area (sqin)	Break Type	Operator Identifier	Maximum Load (Lb)	Maximum Stress (psi)
1	07/13/09	03:36:48 PM	23	Cylinder	12	28.27	Cone wVertical Cracks	1	110018	3891
2	07/13/09	03:37:06 PM	23	Cylinder	12	28.27	Cone	1	100020	3537
3	07/13/09	03:37:49 PM	26	Cylinder	12	28.27	Diagonal Fractures	25	110009	3891
4	07/13/09	03:39:11 PM	28	Cylinder	12	28.27	Cone	25	110017	3891
5	07/13/09	03:39:42 PM	29	Cylinder	12	28.27	Cone wVertical Cracks	25	100024	3538
Low:									100020	3537
Mean:									106018	3750
High:									110018	3891
Std. Dev.:									5473	194

Upload test results into GaugeSafe then export the results into spreadsheet programs or corporate databases.

Upload the raw test data into GaugeSafe then view or print an XY plot or store it to disk for future recall.



Use the plot cursor to verify testing rates and points of interest.

Included on the XY plot are key test parameters and results.

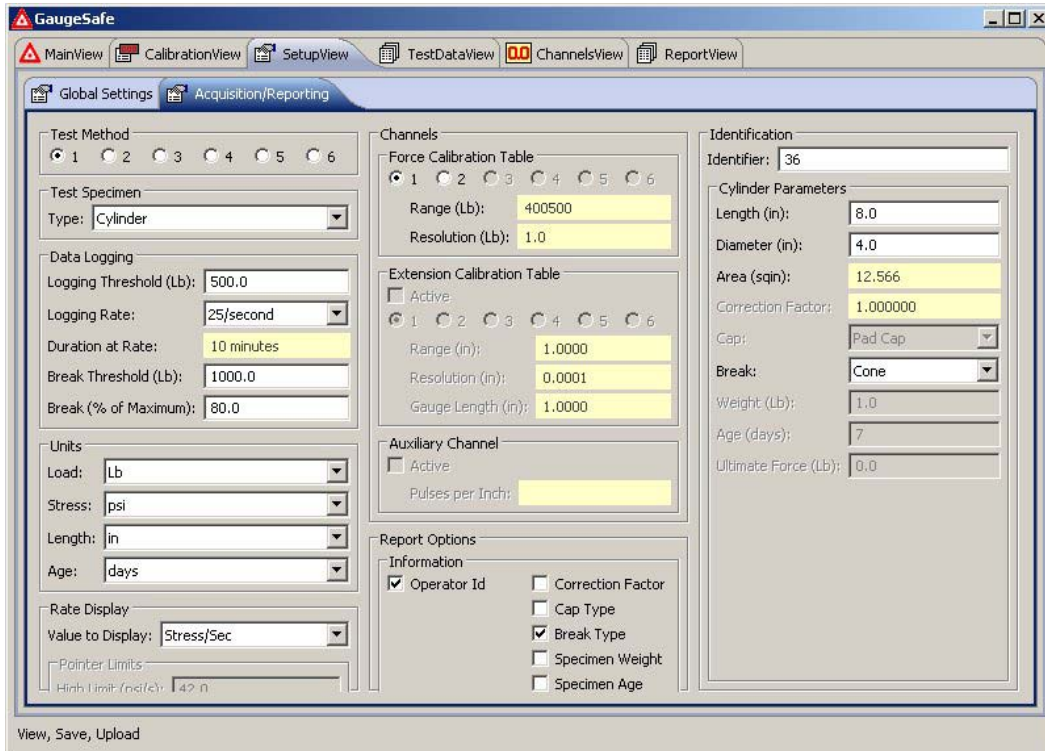


51 Morgan Drive Norwood, MA 02062  
 Tel: (781) 769-0850 Fax: (781) 769-0884  
 sales@ADMET.com www.ADMET.com

**TEST WITH CERTAINTY. TEST WITH ADMET.**

## Test Methods

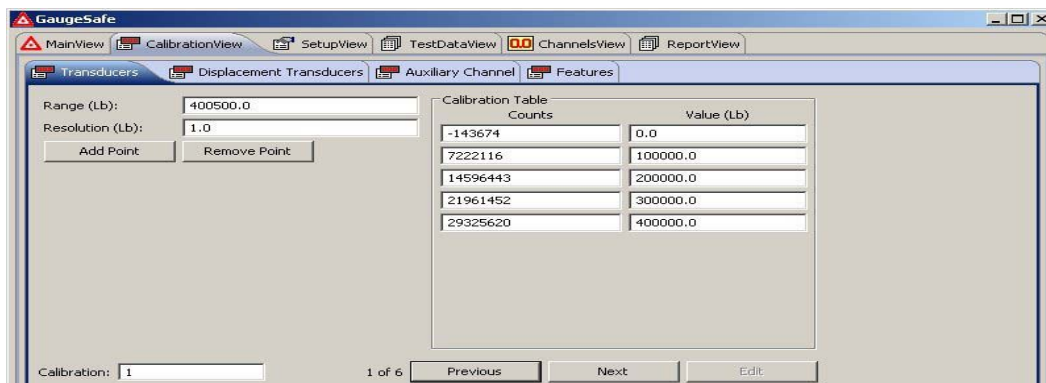
Test methods define the type of test, how it is performed, what results are calculated and how the results are displayed. Test methods can be downloaded from an ADMET testing machine into GaugeSafe via a USB cable or USB flash (thumb) drive. They can be stored to disk for archiving or recall. Test Methods can be edited or created in GaugeSafe then uploaded to an ADMET testing machine ensuring that like tests are performed the same way each time.



*GaugeSafe Test Method dialog.*

## Transducer Calibrations

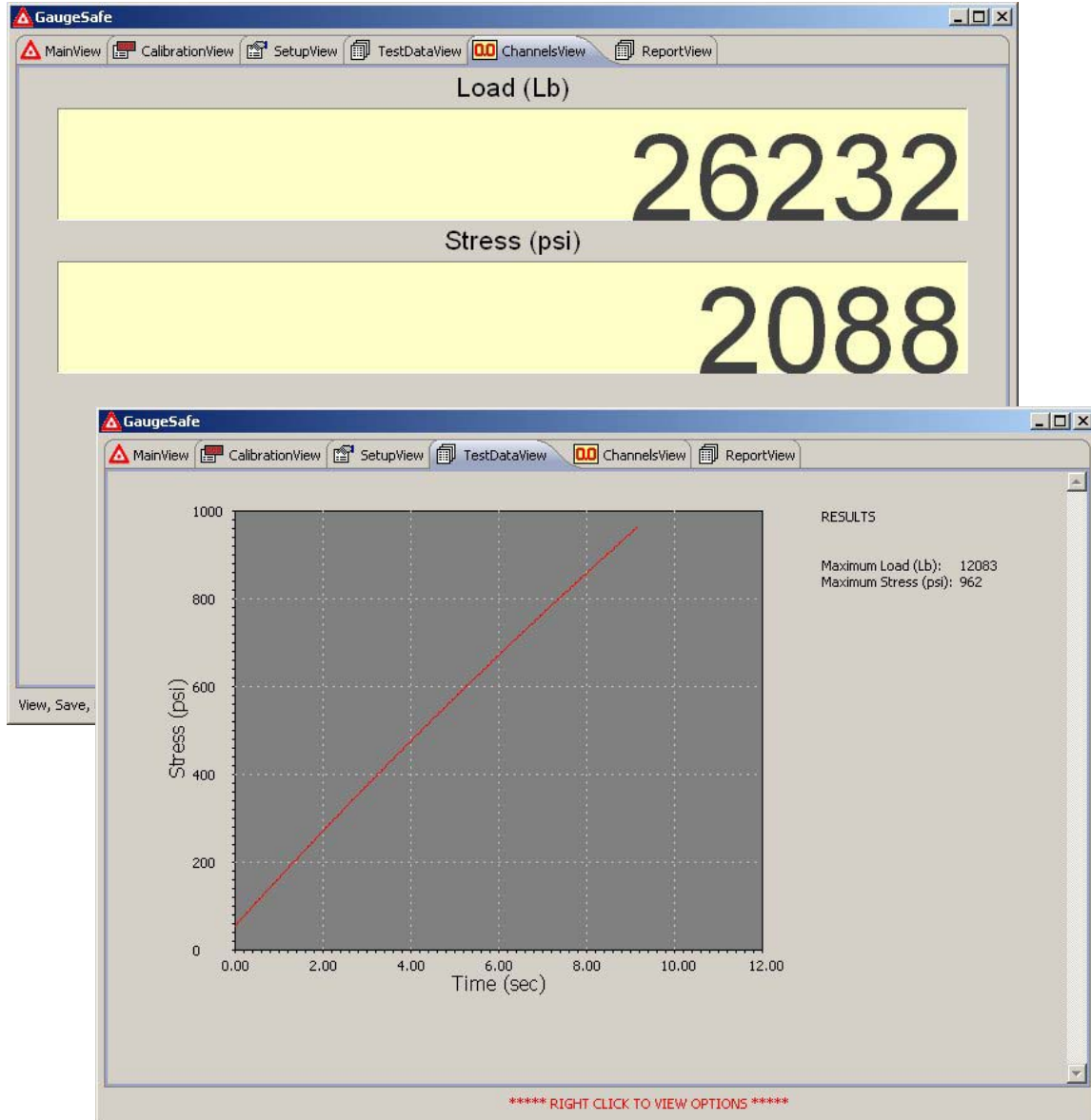
Calibrations translate changes in the electrical output of a transducer to measured values like force or strain. Multiple calibration tables can be stored in an ADMET testing machine to accommodate a variety force ranges, load cells or extensometers. Calibrations can be downloaded from an ADMET testing machine into GaugeSafe via a USB cable or USB flash (thumb) drive. They can be stored to disk for archiving or future recall ensuring a fast recovery in case of a failure. Calibrations can be edited or created in GaugeSafe then uploaded to an ADMET testing machine. Oftentimes streamlining the force verification process.



*GaugeSafe Calibration dialog.*

## Real-time XY Plot and Digital Readout (Option)

A live display option is offered with GaugeSafe for viewing active channels in graphic or numeric form in real-time. Use your mouse to switch between the live plot and numeric views. Live readings are transmitted from your ADMET testing machine via a USB cable. The numeric values of all active channels plus stress are displayed in large digits for easy viewing from long distances. The real-time XY plot view of force or stress vs. time or stress vs. strain is a great way to tell how your test is progressing.



*Live numeric and XY plot screens.*

## Access Rights and Data Storage Options

GaugeSafe offers three levels of password protected access. The access levels relate to test methods, test results and raw XY data only. A separate and unique password is used for editing calibration data. The three access levels are:

**View Only** - The most restrictive access level will only allow the user to view test methods, results or XY plots.

**View and Save** - Allows the user to view, create, edit test methods plus manually save test methods, results and XY plots.

**View, Save and Upload** - Allows the user to view, create, edit test methods. Manually save test methods, results and XY plots. Upload test methods and calibrations into the ADMET testing system.

GaugeSafe allows test methods, calibrations, test results and raw test data to be automatically stored when uploaded. Autostoring your data is a fail-safe way to ensure that none of your test data is lost. The auto store functions are independent of access rights.



*Access rights and data storage are found in the Main View.*

Three versions of GaugeSafe are offered to meet your needs.

	GaugeSafe Basic	GaugeSafe Plus	GaugeSafe Live
Test Methods - Edit, Store, Upload/Download	X	X	X
Calibrations - Edit, Store, Upload/Download	X	X	X
Test Results - Store, View, Print, Export in ASCII delimited format	X	X	X
Raw Test Data - Store, Export in ASCII delimited format	X	X	X
XY Plots - View, Print, Export		X	X
Live XY Plot of force or stress vs. time or force or stress vs. strain.			X
Live Numeric Values (large font) of active channels plus stress.			X