

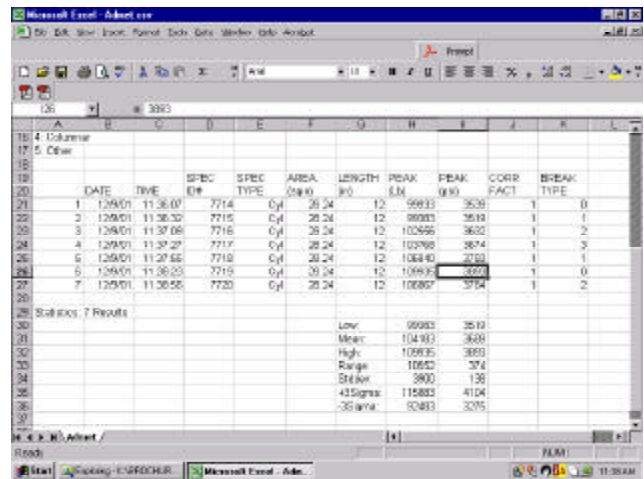
WinCom PLUS

Serial Communications, Data Management and Plotting Program.

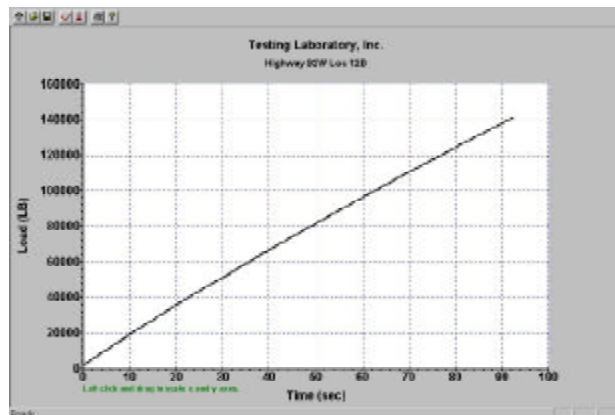
Unlock the power of your testing machine!

Transmit raw test data and results to your computer network and:

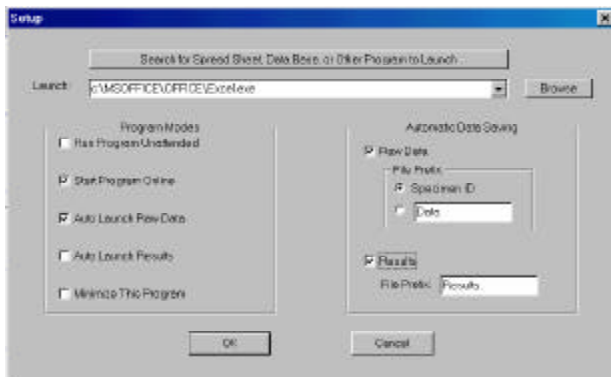
- Eliminate data entry errors by importing test results into your client reports.
- Save test results to your company network for easy access and safe keeping. Never lose data.
- Use the plotting features to ensure that your tests are being performed according to ASTM specification.
- Save money and aggravation by eliminating the need for a printer at your testing machine.



Store test results on your network computer and view in Microsoft Excel.



Verify that test loading rates meet ASTM requirements.



Simple menu allows easy setup of saving configurations.

WinCom PLUS features:

- Automatic capture of test results and raw test data.
- Automatically launch and view results and raw test data in common spreadsheet programs like Microsoft Excel.
- View and print load/stress vs. time or load/stress vs. strain plots. Overlay up to 10 curves on one graph.
- Run in unattended mode and automatically save test results in ASCII comma delimited format.
- Run in unattended mode and automatically save raw test data in binary format for later viewing. Recall files and view or print load/stress vs. time or load/stress vs. strain plots at any time.
- Define a filename prefix and let WinCom append a date and time stamp so that your files are easily identifiable.
- Easy to use Windows 95/98/NT/2000/XP compatible program.



51 Morgan Drive Norwood, MA 02062
 Tel: (781) 769-0850 Fax: (781) 769-0884
 sales@admet.com www.tensiletesters.com