



## GP-2.4T

### GP-2.4T Pneumatic grip 2.4 kN

Symmetric clamping. Dual-action for self centring of the specimen which allows its quick and easy loading.

Each grip is supplied with a specimen alignment device, which can be mounted directly on the jaws.

#### Ordering information

GP-2.4T are supplied in pairs, but can also be ordered as single grip (0.5 pair). Jaw faces need to be ordered separately.

GP-2.4T



Item number	GP-2.4T
Clamping force	2.4 kN at 7bar
Temperature range	0°C - +70°C Other temperature ranges on request
Body	Aluminium
Pneumatic connection	Internal thread coupling 1/8"
Weight	1.21kg each grip (without jaws)

#### Jaws for GP-2.4T: Scope of delivery 1 set = 4 jaws

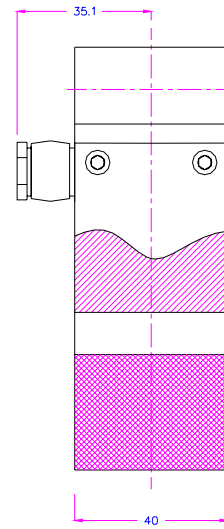
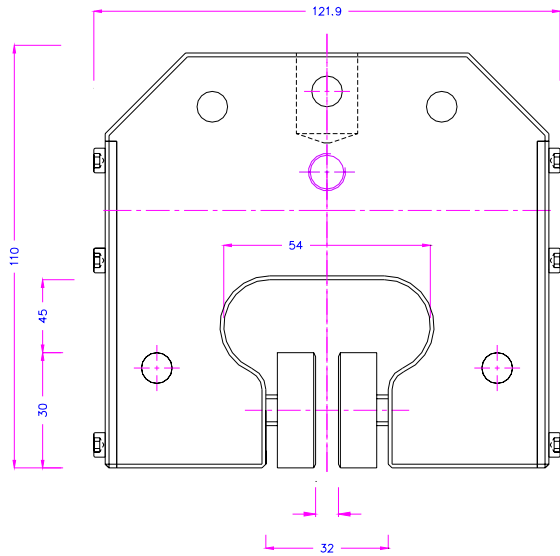
Item No.	Surface	Clamping surface H x W	Opening	Weight per pair
GP-2.4T-B	Blank jaws	30 x 50mm	0 – 7mm*	0.22kg
GP-2.4T-BG	Rubber jaws	30 x 50mm	0 – 5mm*	0.22kg
GP-2.4T-BP	Pyramid jaws	30 x 50mm	0 – 7mm*	0.22kg
GP-2.4T-BV	V-jaws	30 x 40mm	4 – 7mm Ø*	0.18kg
GP-2.4T-BW	Wave jaws	30 x 50mm	0 – 7mm*	0.20kg
GP-2.4T-BD	Diamond jaws	30 x 50mm	0 – 7mm*	0.22kg

\* Other opening widths (up to 12 mm) and jaw faces with differing dimensions and surface coatings are also available on request

	<b>Blank jaws</b> <ul style="list-style-type: none"> <li>Suitable for own further treatments</li> <li>Steel-blanks without coating</li> </ul>
	<b>Rubber jaws</b> <ul style="list-style-type: none"> <li>1 mm rubber coating (NBR)</li> <li>Nickel-plated</li> </ul>
	<b>Pyramid jaws</b> <ul style="list-style-type: none"> <li>Pyramids 1.2x45</li> <li>Hardened steel 58HRC</li> <li>Nickel-plated</li> </ul>
	<b>V-jaws</b> <ul style="list-style-type: none"> <li>For all kinds of round samples</li> <li>Tooth pitch 1.2 mm</li> <li>Hardened steel 58HRC</li> <li>Nickel-plated</li> </ul>
	<b>Wave jaws</b> <ul style="list-style-type: none"> <li>For flexible materials</li> <li>Wave 5 mm</li> <li>Hardened steel 58HRC</li> <li>Nickel-plated</li> </ul>
	<b>Diamond jaws</b> <ul style="list-style-type: none"> <li>Clamping surface coated with synthetic diamonds</li> <li>Nickel-plated</li> </ul>



# GP-2.4T



GP-2.4T

## Examples for special requirements solutions

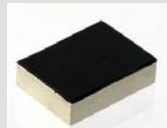


GP-2.4T+V+2R

GP-2.4T+V+2R



GP-2.4T-BG20x50  
Height 20 mm x Width 50 mm



GP-2.4T-BG30x40  
Height 30 mm x Width 40mm



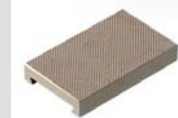
GP-2.4T-BG25x25  
Height x Width 25 mm



GP-2.4T-BP30x25-0.7x45  
Height 30mm x Width 200 mm – small pyramids 0.7x45



GP-2.4T-GT  
Inset jaws carrier



GP-2.4T-EBP  
Pyramid inset jaws



Accessories:



**TH205-1**

2 pneumatic foot switches, tubes and fittings

None locking: The jaws of the grip open by pressing the foot pedal and close after removing the foot from the pedal.

Scope of delivery: 1 pair of foot switches including tubes and fittings



**TH205-2**

2 pneumatic foot switches, tubes and fittings

With locking function: The jaws of the grip open by pressing the foot pedal and remain opened after removing the foot from the pedal. The jaws close by pressing the pedal one more time.

Scope of delivery: 1 pair of foot switches including tubes and fittings



**TH205-.+PR**

Optional for TH205-1 or TH205-2

Pressure regulator

To adjust air pressure: 1-10 bar



**TH205-3**

1 unit of pneumatic hand switches, tubes and fittings

With locking function: Handle with 2 positions. The jaws of the grip close by pulling the handle and remain closed. The jaws open by pushing the handle back.

Scope of delivery: 1 unit of hand switches including tubes and fittings



**TH205-4**

Pneumatic micro – hand switches, tubes and fittings

With locking function: The hand switches are directly installed at the grips (only for 1/8" couplings), 3/2 directional valve

Scope of supply: 2 hand switches including tubes and fittings



**TH216**

Silent compressor appropriate for laboratories

Max pressure: 16 bar; noise level: 45dB(A)

Motor 400 Watt; displacement 25 l/min

With pressure reducer / water trap

Dimensions: 280x190x240 mm (L x W x H); weight ~ 14 kg