



CPC

CPC-AL Aluminum platen

- For soft samples, cardboards, plastics etc.
- Aluminum anodized
- Temperature range: -70°C - +180°C
- Max capacity depends on the size of coupling

Ordering information

Scope of delivery: 1 pair

Item number	Diameter	Coupling	Weight / each platen
CPC-56-B-AL	56 mm	B*	~0.1kg
CPC-96-B-AL	96 mm	B*	~0.3kg
CPC-116-B-AL	116 mm	B*	~0.4kg
CPC-156-B-AL	156 mm	B*	~0.6kg
CPC-196-B-AL	196 mm	B*	~1.2kg
CPC-246-B-AL	246 mm	B*	~1.5kg
CPC-296-B-AL	296 mm	B*	~3.3kg

Platens with other dimensions and surfaces on request



CPC-St Steel platen

- For hard materials, steel, plastics, stone etc.
- Hardened steel 58 HRC, manganese phosphated
- Temperature range: 0°C - +350°C
- Nickel plated: -70°C - +350°C (on request)
- Max capacity depends on the size of coupling

Ordering information

Scope of delivery: 1 pair

Item number	Diameter	Coupling	Weight / each platen
CPC-56-B-St	56 mm	B*	~0.3kg
CPC-96-B-St	96 mm	B*	~0.7kg
CPC-116-B-St	116 mm	B*	~1.1kg
CPC-156-B-St	156 mm	B*	~1.6kg
CPC-196-B-St	196 mm	B*	~4.0kg
CPC-246-B-St	246 mm	B*	~4.3kg
CPC-296-B-St	296 mm	B*	~9.0kg
CPC-346-B-St	346 mm	B*	-

Platens with other dimensions and surfaces on request

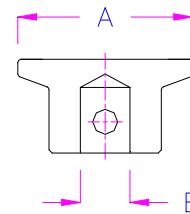


Description of Item number: CPC-A-B-C

A Diameter of platen [mm] 56, 96, 116, 156, 196...etc

B* Coupling: Female [mm] 15.9, 19.1, 20, 30, 31.8, 32, 36, 40 etc
(Adapter) Male [mm] Am15.8, Am20, Am31.7 etc

C Material: AL = Aluminum St = Steel



CPC Platens are rigid platens. For self adjusting platens see THS223

CPC and THS223 platens can be combined.

Ordering Information for combination rigid + self adjusting platen: 0.5 pair CPC + 1x THS223

Examples for other versions and special solutions



CPC-116-159-AL with additional adapter
THS626-158-158



CPC-156-38-Ni: Nickel plated steel platen
Temperature range -70°C - +350°C



CPC-156-Am20-St



CPC-196-30-St-M8
Steel platen with M8 thread



CPC-20-Am12-St



CPC-56-Af159-V2A