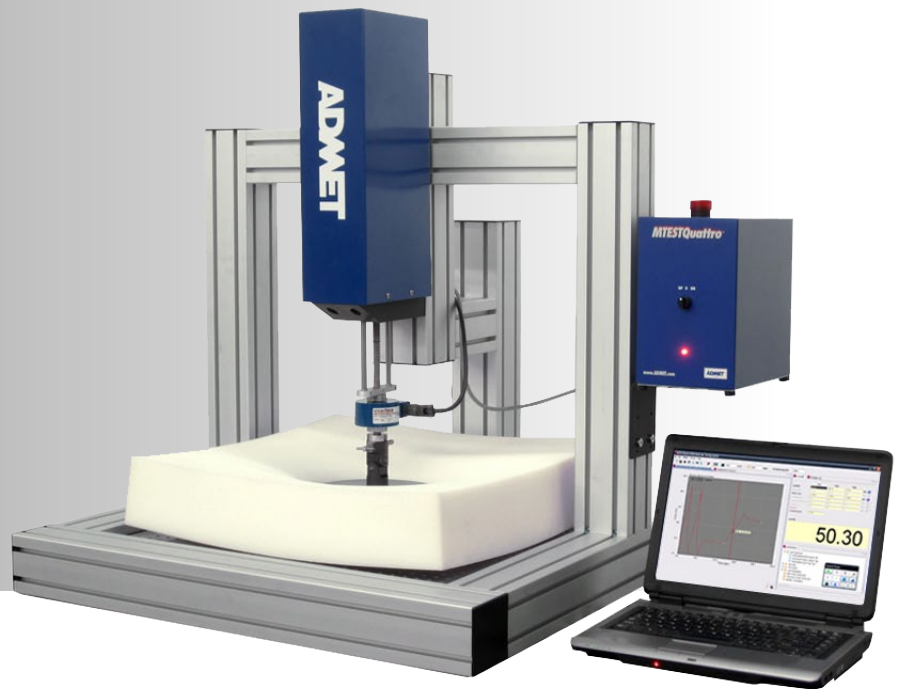


eXpert 5600F Series

Foam Testing Systems

ADMET

System Brochure



eXpert 5600F Series

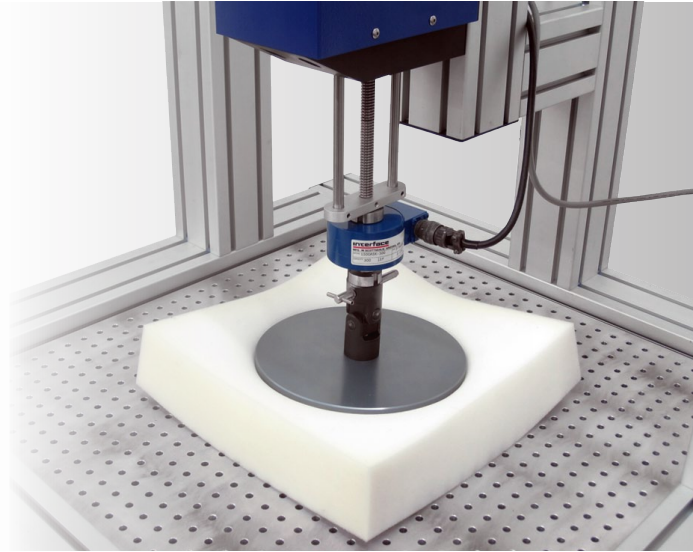
Foam Testing Systems

Accurate, Versatile, Easy to Use.

A complete solution for compression, tensile, elongation, peel, and tear tests on foam.

The eXpert 5600F series of testing machines have been specifically designed to meet the needs of the foam testing industry. After working closely with leaders in the foam industry, we have determined that traditional universal testing machines are not the ideal foam testing solution. Specifically, most systems do not offer enough horizontal testing space to accommodate larger foam samples or provide the capability to perform tension testing. Those that do are designed with other applications in mind and are prohibitively expensive. The eXpert 5600F series solves these issues by combining a frame designed specifically for foam specimens with our proven tension / compression actuators and machine controllers.

- 24" x 24" perforated lower base platen
- Tensile grips that are wide enough for thick foams
- Change between tensile and compression tests quickly
- Upper platen with swivel joint for non-level foam
- Preloaded foam test methods and analysis (MTESTQuattro)

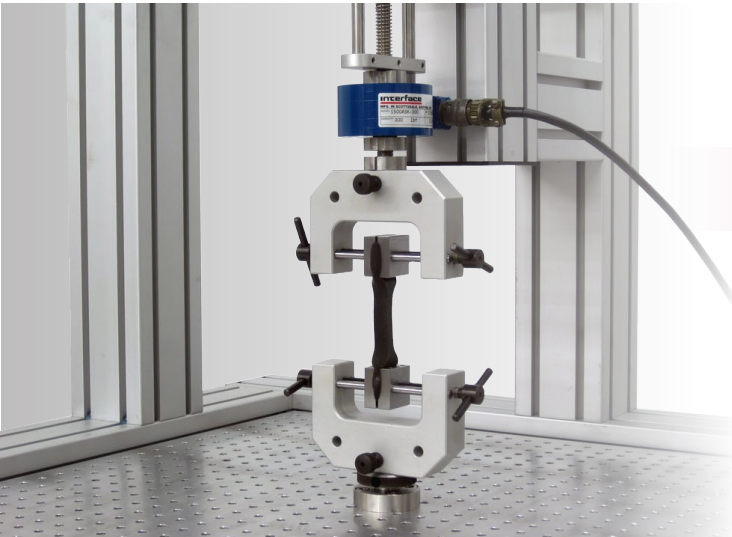


Customizable - Backed by superior engineering and a willingness to tailor a system to your testing needs.

Taller, shorter, wider, faster, slower: Our engineering group will configure a design to meet your specifications.

Trusted - Expertly designed, engineered and supported for life.

- Exceeds all ASTM/ISO/JIS accuracy requirements.
- Fastest in the industry, an 8 kHz servo loop rate ensures accurate, repeatable, and reliable testing.
- All testing systems are supported for life.



Test with Certainty.

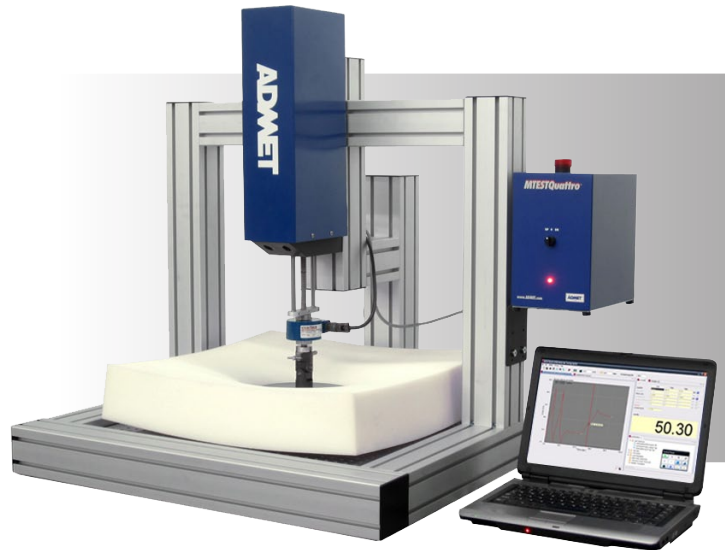
eXpert 5600F Series

Foam Testing Systems

Accurate, Versatile, Easy to Use.

System Specifications

Model		5601F Table Top	5603F Table Top	560XF Table Top
Load Capacity	lbf	225	1,000	Custom
	kN	1	4.5	
	kgf	100	450	
Maximum Speed	in/min	25	20	Custom
	mm/min	635	504	
Minimum Speed	in/min	0.001	0.001	0.001
	mm/min	0.025	0.025	
Position Control Resolution	μin	2.9	2.2	N/A
	μm	0.073	0.057	
Max Tensile Extension	in	12	12	12
	mm	304	304	
Max Foam Thickness (compression)	in	10	10	Custom
	mm	254	254	
Max Foam Thickness (tension)	in	2	2	Custom
	mm	50	50	
Max Foam Size	in	24x24	24x24	Custom
	mm	610x610	610x610	
Machine Footprint	in	32x32	32x32	N/A
	mm	812x812	812x812	
Maximum Power	VA	100	250	250
Single Phase Voltage	VAC	100-240	110,220	110,220
	Hz	47-63	50,60	50,60



Notes:

Load Measurement Accuracy: +/- 0.5% of reading down to 1/100 of load cell capacity. Meets or exceeds ASTM E4, BSENIS 7500-1: 2004, DIN 51221 and JIS B7721 standards. ADMET self-identifying load cells are offered with all systems.

Strain Measurement Accuracy: +/- 0.5% of reading down to 1/50 of full scale with ASTM E83 class B extensometers. Meets or exceeds ASTM E83 and BSENISO9513: 2002 standards.

Increasing or decreasing load capacity has an inverse effect on testing speed, and vice versa.

Modifying a systems load capacity, speed, or length can result in an increase or decrease in weight.



Test with ADMET.

eXpert 5600F Series

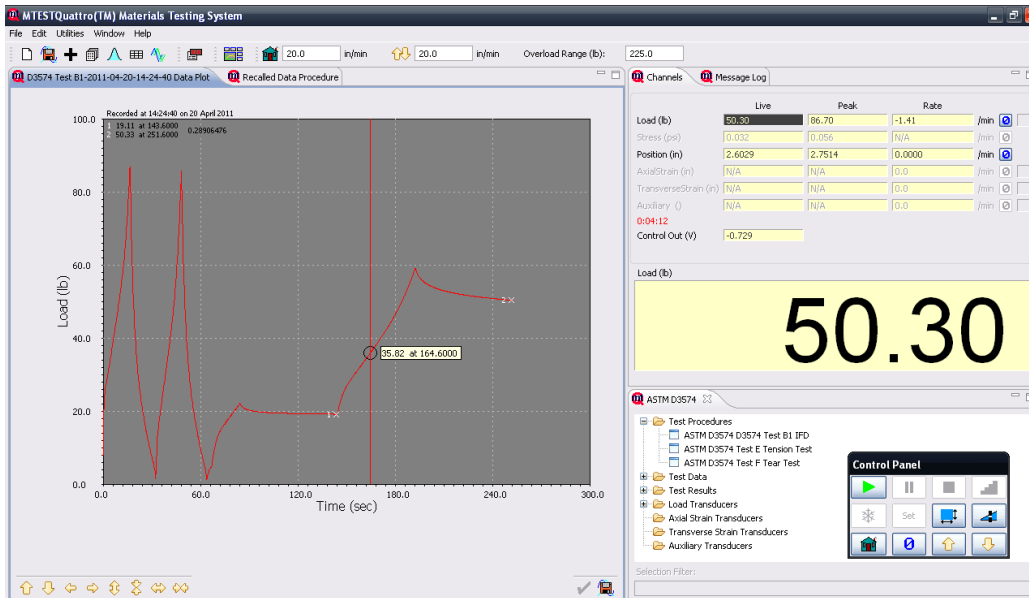
Foam Testing Systems

Compact, Precise, and Versatile.

Controls and Software

All ADMET Testing Machines can be equipped with one of two closed loop servo controllers. MTESTQuattro®, our most advanced testing system, is a PC-based unit that offers a wide range of flexibility in control, data acquisition, analysis, and reporting. The eP2 Digital Controller, a standalone touch panel unit, offers a balance between performance and simplicity. Both controllers feature 8 kHz servo update periods and programmable log rates to 1 kHz.

Controller Interface	MTESTQuattro® PC Software	eP2 Digital Controller Touch Panel
Analysis	Extensive calculations library w/ built-in ASTM/ISO specification analysis.	Standard calculation package for basic testing requirements and QC testing.
Test Procedures	Use built-in or create an unlimited number of simple to complex procedures.	Save up to six test procedures in eP2.
Reporting	Store and organize all data. View and print user customizable test reports with chart and tables.	Post test, view current results on eP2 screen and send data to PC for reporting using optional GaugeSafe software.



MTESTQuattro® performing ASTM D3574 IFD Test

Service and Calibration

Training and Service - ADMET testing systems are easy to learn and use. We provide free introductory on-line training and, if needed, additional on-site training. Our manuals, tutorials, and trouble shooting guides are updated regularly. We provide free phone and email product support through the life of the system. ADMET's on-site service and calibration team includes over 100 individuals in over 40 locations in the USA.

Calibration - Customers can setup calibration contracts with ADMET or a private party. All services are A2LA accredited and meet ISO/IEC Guide 17025 and ANSI/NCSL Z540.



51 Morgan Drive Norwood, MA 02062
Tel: (781) 769-0850 Fax: (781) 769-0884
Sales@ADMET.com www.ADMET.com

www.ADMET.com

Copyright 2010. All rights reserved. ADMET, Inc. Norwood, MA 02062 USA