

**GH-T Hydraulic grip**

- Clamping force 60kN/315bar
- Single acting cylinder  
Max stroke: 15mm
- Standard temperature range: 0 °C - +70°C
- Hydraulic connection: 1/4"
- Body: Steel, manganese phosphate coating
- Weight: ~15kg each (without jaws)
- Scope of supply: 1 pair



**Jaw faces for GH-T: Scope of supply:** 1 set = 4 jaw faces



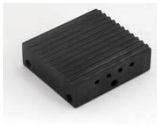
- Blank (smooth) jaws**
- Suitable for own further treatments.
  - Steel blanks without coating



- Pyramid (serrated, cross cut) jaws**
- Hardened steel 58 HRC
  - Manganese phosphate coating
  - Pyramids 1.2x45°



- V-Jaws**
- All kinds of round samples
  - Hardened steel 58 HRC
  - Manganese phosphate coating
  - Tooth pitch 1,2 mm



- Wave jaws (corrugated)**
- Wave 5 mm
  - Hardened steel 58 HRC
  - Manganese phosphate coating



- Diamond coated jaws**
- Nickel plated jaw faces
  - Clamping surface coated with synthetic diamonds D91 (170/200 mesh)

- Diamond coated V-jaws**
- Notch sensitive round samples
  - Hardened steel 58 HRC, nickel plated
  - Clamping surface coated with synthetic diamonds D91 (170/200 mesh)

Item number	Clamping surface	Clamping surface H x B	Opening	Weight/ 1 pair
GH-T-B	Blank jaw faces	60 x 66mm	0 – 30 mm	~ 1.2kg
GH-T-BP	Pyramid jaw faces	60 x 66mm	0 – 30 mm	~ 1.2kg
GH-T-BV	V-jaws	Clamping height 60mm	8 – 30 mm Ø	~ 1.2kg
GH-T-BW	Wave jaw faces	60 x 66mm	0 – 20 mm	~ 1.2kg
GH-T-BD	Diamond coated jaws	60 x 66mm	0 – 30 mm	~ 1.2kg
GH-T-BDV	Diamond coated V-jaws	Clamping height 60mm	8 – 30 mm Ø	~ 1.2kg
GH-T-B210	Blank jaw faces	70 x 210 mm	0 – 20 mm	~ 6.7kg
GH-T-BW210	Wave jaw faces	70 x 210 mm	0 – 20 mm	~ 6.7kg
GH-T-BWG210	Rubber coated wave jaws	70 x 210 mm	0 – 16 mm	~ 6.7kg

Additional jaws (dimensions and surface coatings) available on request



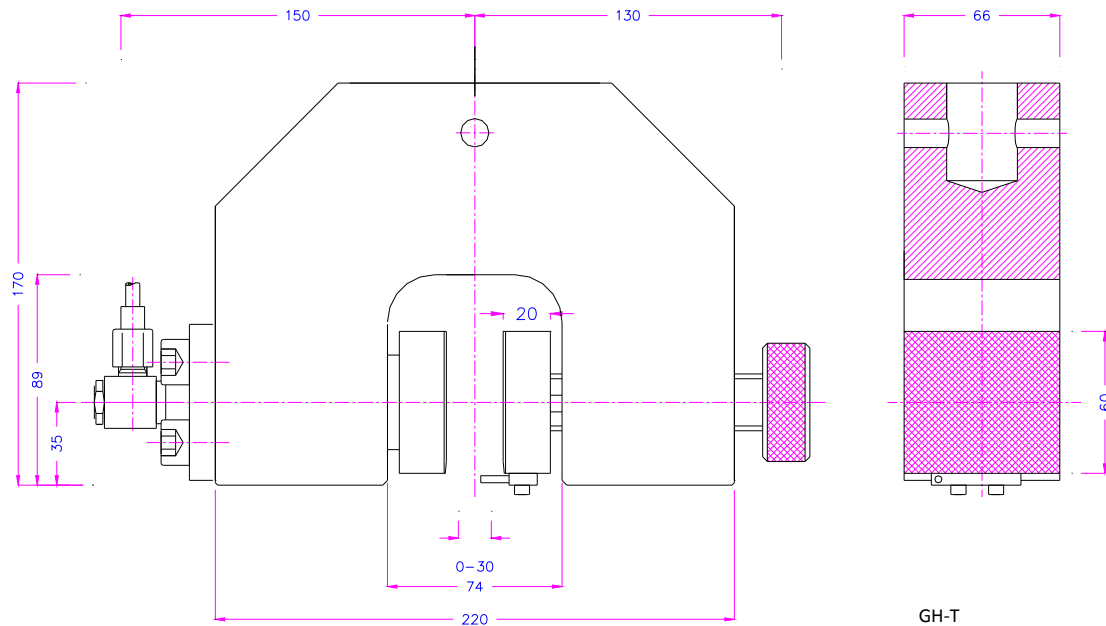
GH-T-d - symmetric design double acting cylinder



GH-T-A - Hydraulic grip for large jaws



GH-T



**Accessories:**



**TH135-P2**

Air hydraulic pump  
Max pressure: 350 bar, pressure ratio air:hydraulic 1:61  
2 valves for separate switching of the grips (opening, closing)  
Remote control with 2 switches; ~220V ; 0.1 A  
Dimensions LxWxH: 315mm x 250mm x 500mm; weight ~25 kg



**TH135-P2-G-a**

Air hydraulic pump similar to TH135-P2 including:  
- Housing for noise reduction  
- Analogue pressure transducer: analogue signal 1 -10 V to adjust the clamping pressure from 40 to 400 bar  
Dimensions LxWxH: 720mm x 360mm x 630mm; weight: ~38 kg



**TH135-P2-2-G-a**

Air hydraulic pump similar to TH135-P2 including:  
- 4 valves to lock the jaws at any required position  
- Housing for noise reduction  
- Analogue pressure transducer: analogue signal 1 -10 V to adjust the clamping pressure from 40 to 400 bar  
Dimensions LxWxH: 720mm x 360mm x 630mm; weight: ~50 kg