

GH-60T Hydraulic grip

- Clamping force 60kN/315bar
- Single acting cylinder
Max stroke: 15mm
- Standard temperature range: 0 °C - +70°C
- Hydraulic connection: 1/4"
- Body: Steel, manganese phosphate coating
- Weight: ~15kg each (without jaws)
- Scope of supply: 1 pair



Jaw faces for GH-60T: Scope of delivery: 1 set = 4 jaw faces



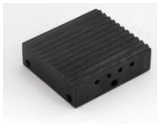
- Blank (smooth) jaws**
- Steel blanks without coating
 - Suitable for further treatments



- Pyramid (serrated, cross cut) jaws**
- Hardened steel 58 HRC
 - Manganese phosphate coating
 - Pyramids 1.2x45°



- V-Jaws**
- All kinds of round samples
 - Hardened steel 58 HRC
 - Manganese phosphate coating
 - Tooth pitch 1.2 mm



- Wave jaws (corrugated)**
- Wave 5 mm
 - Hardened steel 58 HRC
 - Manganese phosphate coating



- Diamond coated jaws**
- Nickel plated jaw faces
 - Clamping surface coated with synthetic diamonds D91 (170/200 mesh)

- Diamond coated V-jaws**
- Notch sensitive round samples
 - Hardened steel 58 HRC, nickel plated
 - Clamping surface coated with synthetic diamonds D91 (170/200 mesh)

Item number	Clamping surface	Clamping surface H x B	Opening	Weight/ 1 pair
GH-60T-B	Blank jaw faces	60 x 66mm	0 – 30 mm	~ 1.2kg
GH-60T-BP	Pyramid jaw faces	60 x 66mm	0 – 30 mm	~ 1.2kg
GH-60T-BV	V-jaws	Clamping height 60mm	8 – 30 mm Ø	~ 1.2kg
GH-60T-BW	Wave jaw faces	60 x 66mm	0 – 20 mm	~ 1.2kg
GH-60T-BD	Diamond coated jaws	60 x 66mm	0 – 30 mm	~ 1.2kg
GH-60T-BDV	Diamond coated V-jaws	Clamping height 60mm	8 – 30 mm Ø	~ 1.2kg
GH-60T-B210	Blank jaw faces	70 x 210 mm	0 – 20 mm	~ 6.7kg
GH-60T-BW210	Wave jaw faces	70 x 210 mm	0 – 20 mm	~ 6.7kg
GH-60T-BWG210	Rubber coated wave jaws	70 x 210 mm	0 – 16 mm	~ 6.7kg

Additional jaws (dimensions and surface coatings) available on request.



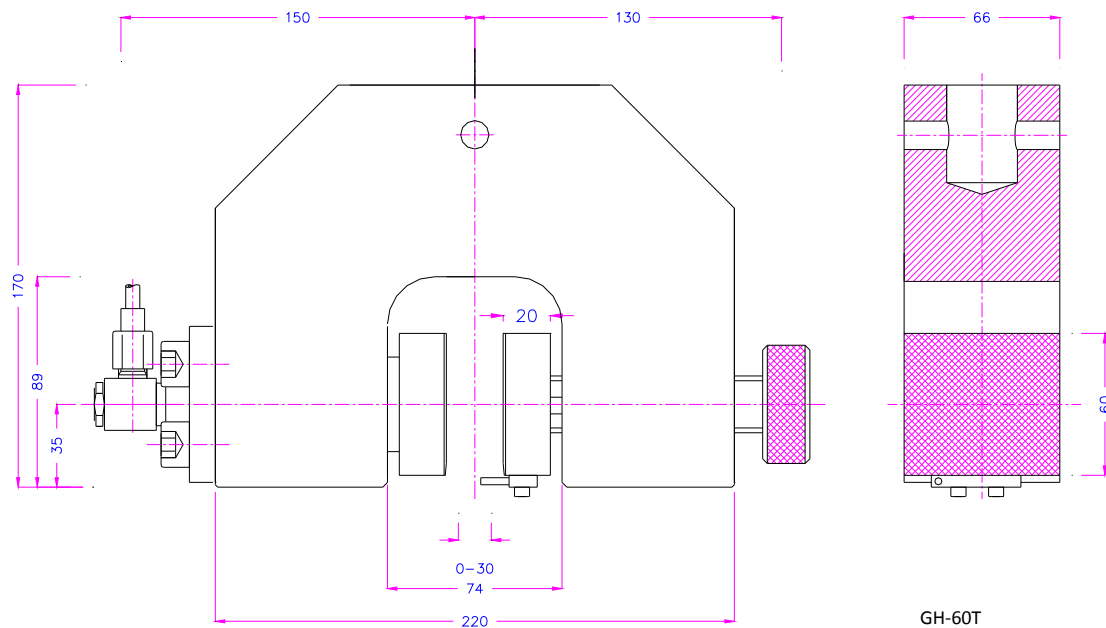
GH-T-d - symmetric design double acting cylinder



GH-T-A - Hydraulic grip for large jaws



GH-60T



Accessories:



GH135-P2

Air hydraulic pump

Max pressure: 350 bar, pressure ratio air:hydraulic 1:61

2 valves for separate switching of the grips (opening, closing)

Remote control with 2 switches; ~220V ; 0.1 A

Dimensions LxWxH: 315mm x 250mm x 500mm); weight ~25 kg



GH135-P2-G-a

Air hydraulic pump similar to TH135-P2 including:

- Housing for noise reduction

- Analogue pressure transducer: analogue signal 1 -10 V to adjust the clamping pressure from 40 to 400 bar

Dimensions LxWxH: 720mm x 360mm x 630mm; weight: ~38 kg



GH135-P2-2-G-a

Air hydraulic pump similar to TH135-P2 including:

- 4 valves to lock the jaws at any required position

- Housing for noise reduction

- Analogue pressure transducer: analogue signal 1 -10 V to adjust the clamping pressure from 40 to 400 bar

Dimensions LxWxH: 720mm x 360mm x 630mm; weight: ~50 kg