

GP-1T – Pneumatic Grip

Pneumatic piston 50mm Ø
 Capacity: 1.2 kN 7 bar (max 16 bar)
 Opening: 10 mm (depending on jaw size)



GP-1T



GP-1T+2Ko

Jaws for GP-1T: Scope of delivery 1 Set = 4 jaws

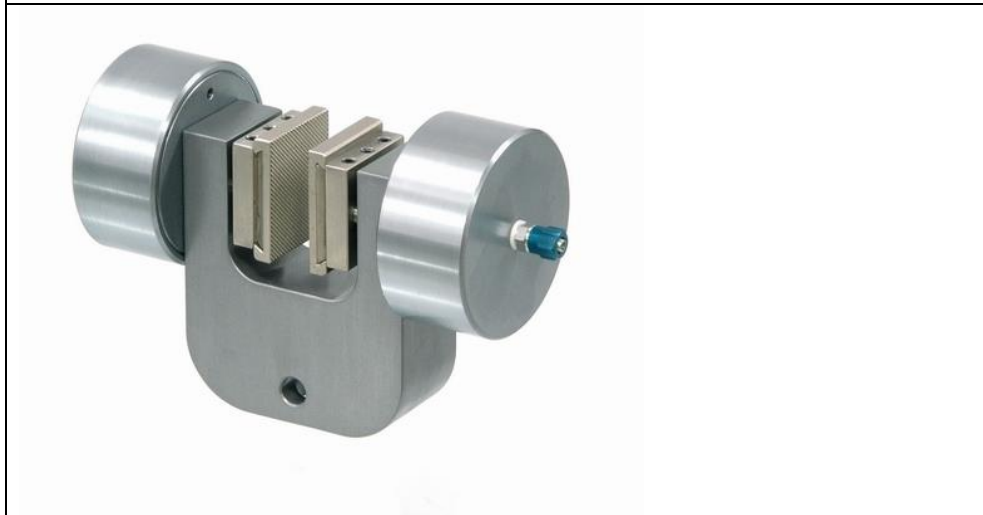
Item number	Surface	Clamping surface H x W	Weight/ pair
GP-1T-B	Blank jaws	30 x 30mm	0.13 kg
GP-1T-BG	Rubber jaws	30 x 30mm	0.13 kg
GP-1T-BP	Pyramid jaws	30 x 30mm	0.12 kg
GP-1T-BV2	V-jaws	30 x 30mm	0.12 kg
GP-1T-BV3	V-jaws	30 x 30mm	0.13 kg
GP-1T-BW	Wave jaws	30 x 30mm	0.12 kg
GP-1T-BD	Diamond jaws	30 x 30mm	0.13 kg
GP-1T-B50	Blank jaws	30 x 50mm	0.22 kg
GP-1T-BG50	Rubber jaws	30 x 50mm	0.23 kg
GP-1T-BP50	Pyramid jaws	30 x 50mm	0.21 kg
GP-1T-BW50	Wave jaws	30 x 50mm	0.20 kg
GP-1T-BD50	Diamond jaws	30 x 50mm	0.22 kg
GP-1T-B80	Blank jaws	30 x 80mm	0.36 kg
GP-1T-BG80	Rubber jaws	30 x 80mm	0.37 kg
GP-1T-BP80	Pyramid jaws	30 x 80mm	0.35 kg
GP-1T-BW80	Wave jaws	30 x 80mm	0.32 kg
GP-1T-BD80	Diamond jaws	30 x 80mm	0.36 kg
GP-1T-B100	Blank jaws	30 x 100mm	0.45 kg
GP-1T-BG100	Rubber jaws	30 x 100mm	0.46 kg
GP-1T-BP100	Pyramid jaws	30 x 100mm	0.45 kg
GP-1T-BW100*	Wave jaws	30 x 100mm	0.51 kg
GP-1T-BD100	Diamond jaws	30 x 100mm	0.45 kg

* Opening is reduced by 4 mm

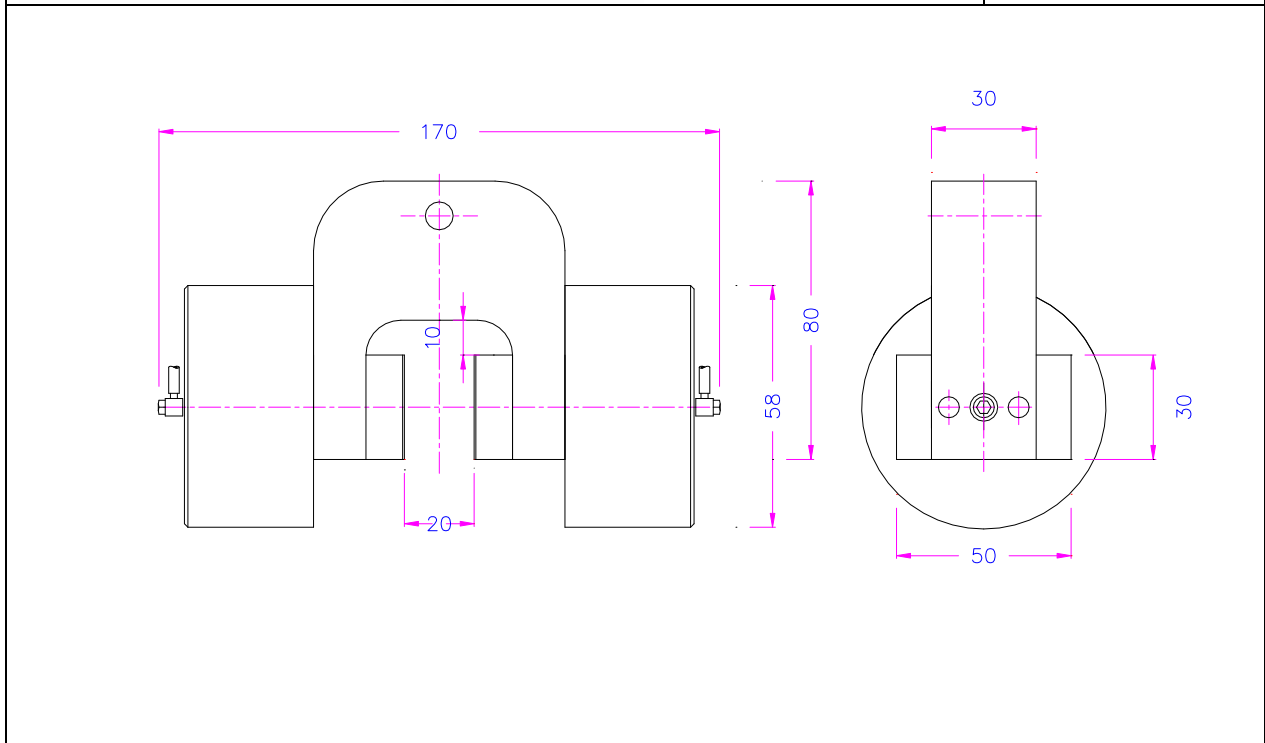
	<p>Blank jaws</p> <ul style="list-style-type: none"> - Steel-blanks without coating - Applicable for further treatment
	<p>Rubber jaws</p> <ul style="list-style-type: none"> - 1mm rubber coating (NBR) - Nickel plated
	<p>Pyramid jaws</p> <ul style="list-style-type: none"> - Pyramids 1.2x45° - Hardened steel 58 HRC - Nickel plated
	<p>V-jaws</p> <ul style="list-style-type: none"> - For all kinds of round samples - Tooth pitch 1.2 mm - Hardened steel 58HRC - Nickel plated
	<p>Wave jaws</p> <ul style="list-style-type: none"> - For flexible materials - Wave 5 mm - Hardened steel 58HRC - Nickel plated
	<p>Diamond jaws</p> <ul style="list-style-type: none"> - Clamping surface coated with synthetic diamonds D91 (170/200 mesh) - Nickel plated

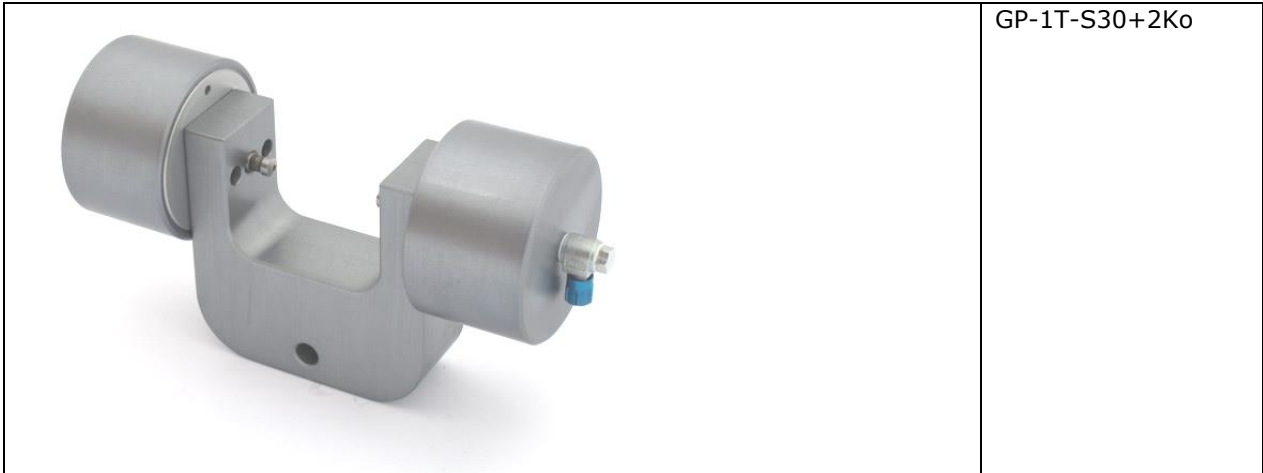


GP-1T-S20+Ko+EBP-V2a
 20mm opening
 With quick-change inserts

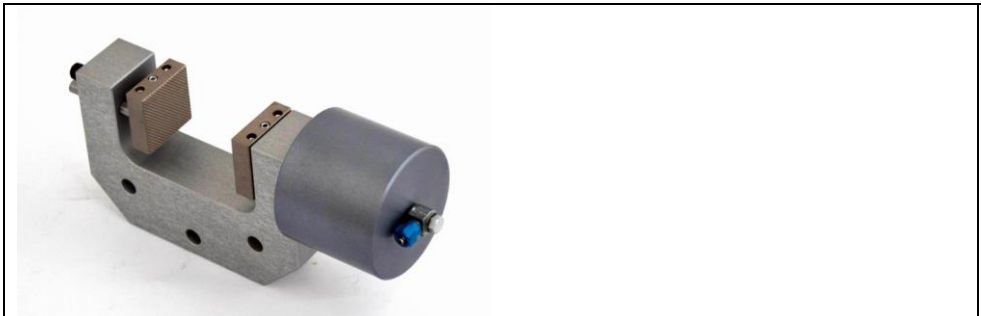
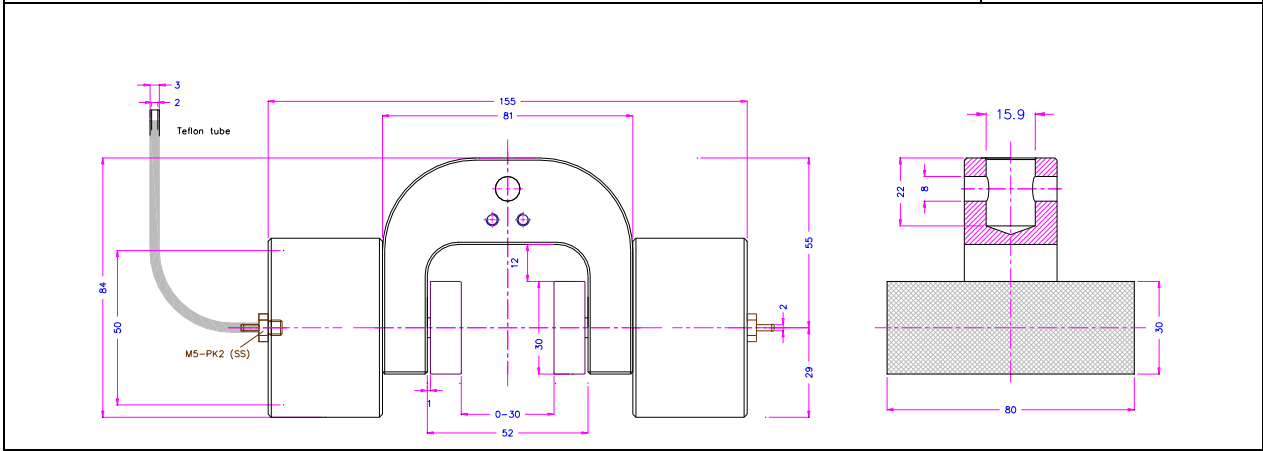


GP-1T-S20+2Ko+EBP
 20mm opening
 With quick-change inserts
 2 rods





GP-1T-S30+2Ko



GP-1T-S50+Ko



GP-1T-S50+2Ko