



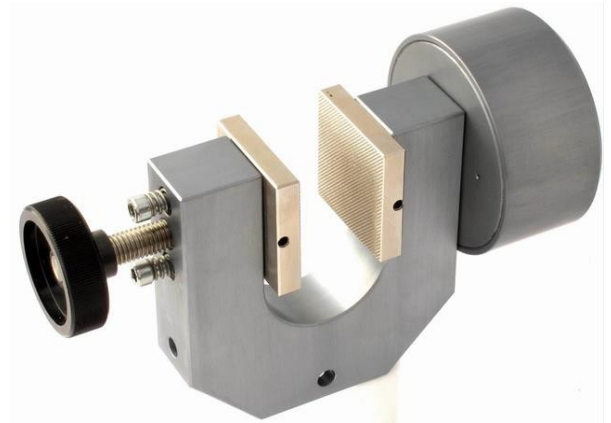
## GP-3.5T

### Pneumatic grip 3.5 kN

GP-3.5T grips are supplied in pairs, but can also be ordered as a single grip (0.5 pair).

Grips and jaws need to be ordered separately.

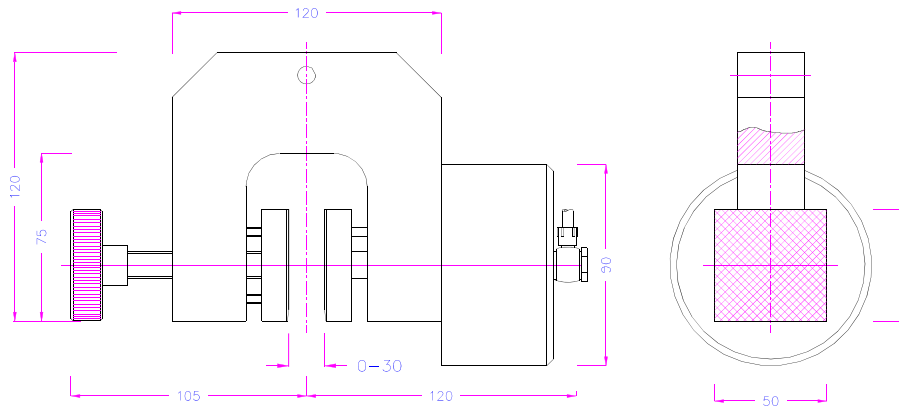
<b>Item No.</b>	<b>GP-3.5T</b>
Clamping force	3.5 kN/7 bar
Temperature range	0 to + 70°C Other temperature ranges on request
Body	Aluminum, anodized
Pneumatic connection	1/8"
Weight per grip	1.3 kg each grip (without jaws)
Scope of delivery	1 pair of grips (without jaws)



#### Jaws for GP-3.5T Scope of delivery 1 set = 4 jaws

Item No.	Jaw surface	Clamping surface H x W	Opening	Weight / pair
GP-3.5T-B50	Blank (smooth) jaws	50x50mm	0-34 mm	0.38kg
GP-3.5T-BG50	Rubber jaws	50x50mm	0-32 mm	0.38kg
GP-3.5T-BV4	V-jaws	Clamping height 50mm	4-30 mm Ø	0.45kg
GP-3.5T-BP50	Pyramid (serrated) jaws	50x50mm	0-34 mm	0.36kg
GP-3.5T-BW50	Wave jaws	50x50mm	0-34 mm	0.34kg
GP-3.5T-BD50	Diamond jaws	50x50mm	0-34 mm	0.38kg
GP-3.5T-B100	Blank (smooth) jaws	50x100mm	0-34 mm	0.76kg
GP-3.5T-BG100	Rubber jaws	50x100mm	0-32 mm	0.78kg
GP-3.5T-BP100	Pyramid (serrated) jaws	50x100mm	0-34 mm	0.72kg
GP-3.5T-BW100	Wave jaws	50x100mm	0-34 mm	0.69kg
GP-3.5T-BD100	Diamond jaws	50x100mm	0-34 mm	0.76kg

Jaws with differing dimensions and surfaces available on request.

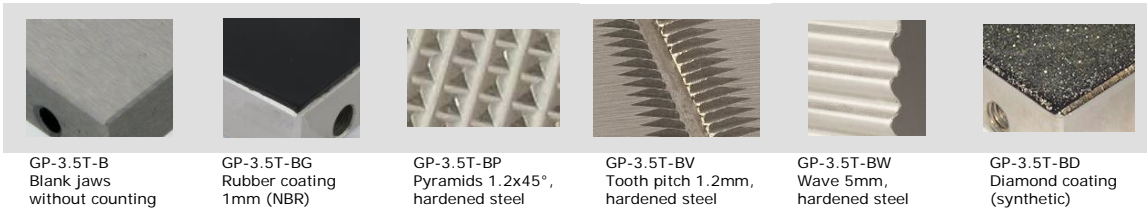


GP-3.5T

Other versions and customer-built solutions.



**Jaws surfaces**



**Accessories:**



**GP-1 Non-Locking Foot Switches**

2 pneumatic foot switches, tubes and fittings

Non-locking: The jaws of the grip open by pressing the foot pedal and close after removing the foot from the pedal.

Scope of delivery: 1 pair of foot switches including tubes and fittings



**GP-2 Locking Foot Switches**

2 pneumatic foot switches, tubes and fittings,

With locking function: The jaws of the grip open by pressing the foot pedal and remain opened after removing the foot from the pedal. The jaws close by pressing the pedal one more time.

Scope of delivery: 1 pair of foot switches including tubes and fittings



**GP-PR**

Optional for GP-1 or GP-2

Pressure regulator

To adjust air pressure: 1-10 bar



**GP-3 Locking Hand Switches**

1 unit of pneumatic hand switches, tubes and fittings

With locking function: Handle with 2 positions. The jaws of the grip close by pulling the handle and remain closed. The jaws open by pushing the handle back.

Scope of delivery: 1 unit of hand switches including tubes and fittings



## GP-3.5T



### GP-4 Locking Hand switches

The hand switches are directly mounted on the grips. 3/2 directional valve with locking function.  
Scope of supply: 2 hand switches including tubes and fittings



### GP-CR Compressor for laboratories, oil-lubricated

Max pressure 16 bar, 230V, noise level: 38dB(A)/1m  
Displacement 5 l/min, tank size 3.1 litre (0.82 gallon)  
Dimensions: 340x290x340 mm (L x W x H); weight 16 kg  
Different voltages available on request