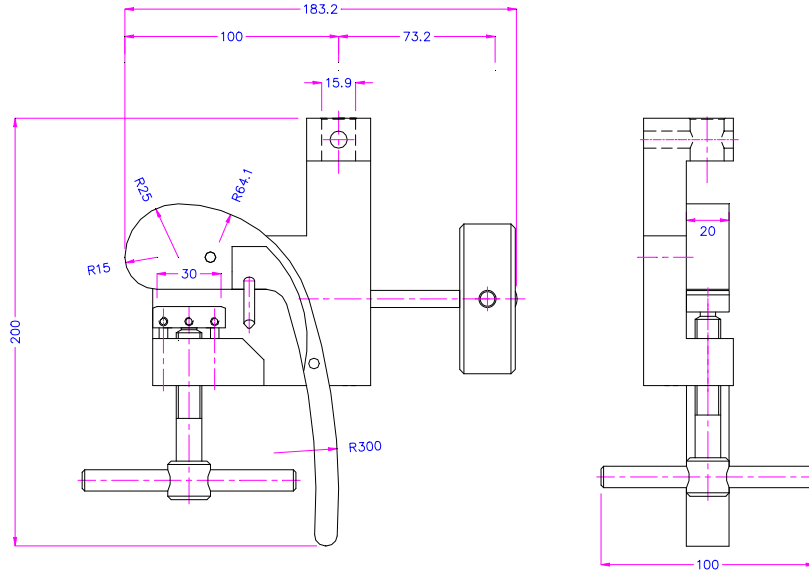


**GRW-5T**

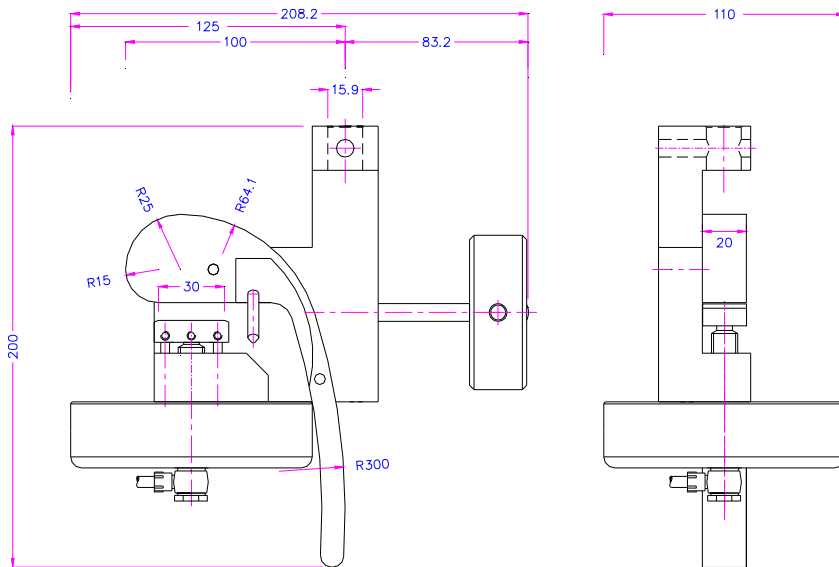
- Bollard style grip applicable for testing light ropes, cords, yarn, etc.
- Available as pneumatic and manual vise versions

**Item-No. : GRW-5T**

Clamping force:	5 kN
Sample size:	Rope Ø: 0-3 mm Ribbon width: max. 20 mm
Temperature range:	0°C ... +70°C * Extended temperature range also available.
Bollard:	Steel
Body:	Aluminum
Standard coupling:	15.9mm (5/8") Female Eye End
Weight:	Grip with balance weight ~ 2.2 kg Grip without balance weight ~ 1.3 kg
Scope of delivery:	1 pair of grips incl. jaws. Can also be ordered as single grip (0.5 pair)



<b>Item-No.:</b>	<b>GRW-5T+Ko</b>
Clamping force of rod (70 mm Ø):	2.6 kN at 7 bar
Sample size:	Rope Ø: 0-3 mm Ribbon width: max. 20 mm
Temperature range:	0°C ... +70°C * Extended temperature range also available.
Bollard:	Steel
Body:	Aluminum
Standard coupling:	15.9mm (5/8") Female Eye End
Pneumatic connection:	Internal thread 1/8"
Weight:	Grip with balance~ 2.4 kg Grip without balance~ 1.6 kg
Scope of delivery:	1 pair of grips incl. jaws. Can also be ordered as single grip (0.5 pair)

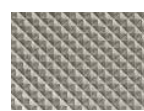


### Jaws for GRW-5T:

Item-No.	Surface	Clamping surface (H x W)
GRW-5T-B	Blank	30 x 20 mm
GRW-5T-BD	Pyramid	30 x 20 mm
GRW-5T-BP	Diamond	30 x 20 mm



Blank jaws



Pyramid jaws



Diamond jaws

**Accessories for GRW-5T+Ko:****GP-2 Non-Locking Foot Switches**

2 pneumatic foot switches, tubes and fittings

Non- locking: The jaws of the grip open by pressing the foot pedal and close after removing the foot from the pedal.

Scope of delivery: 1 pair of foot switches including tubes and fittings

**GP-2 Locking Foot Switches**

2 pneumatic foot switches, tubes and fittings,

With locking function: The jaws of the grip open by pressing the foot pedal and remain opened after removing the foot from the pedal. The jaws close by pressing the pedal one more time.

Scope of delivery: 1 pair of foot switches including tubes and fittings

**GP-PR**

Optional for GP-1 or GP-2

Pressure regulator

To adjust air pressure: 1-10 bar

**GP-3 Locking Hand Switches**

1 unit of pneumatic hand switches, tubes and fittings

With locking function: Handle with 2 positions. The jaws of the grip close by pulling the handle and remain closed. The jaws open by pushing the handle back.

Scope of delivery: 1 unit of hand switches including tubes and fittings

**GP-4 Locking Hand switches**

The hand switches are directly mounted on the grips. 3/2 directional valve with locking function. Scope of supply: 2 hand switches including tubes and fittings

**GP-CR Compressor**

For laboratories, oil-lubricated Max pressure 16 bar, 230V, noise level: 38dB(A)/1m Displacement 5 l/min, tank size 3.1 litre (0.82 gallon)

Dimensions: 340x290x340 mm (L x W x H); weight 16 kg

Different voltages available on request.