



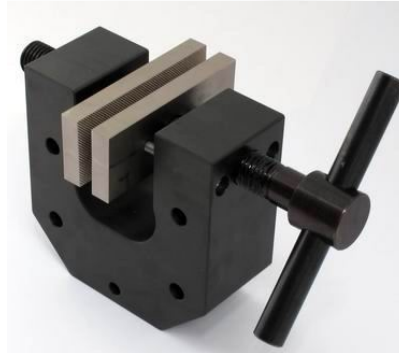
### GV-10T Vise grip

- Clamping force: 10 kN
  - Opening: 0 - 30mm
  - For round samples 6 - 30mm
  - Temperature range: 0°C - +180°C
  - Body made of aluminum
  - Weight ~2.4kg each without jaws
- Scope of delivery: 1 pair



### GV-20T Vise grip

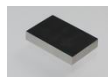
- Clamping force: 20 kN
  - Opening: 0 - 30mm
  - For round samples 6 - 30mm
  - Temperature range: 0°C - +350°C
  - Nickel-plated: -70°C - +350°C
  - Body made of steel
  - Weight ~5.3kg each without jaws
- Scope of delivery: 1 pair



Jaws for GV-T: Scope of delivery: 1 Set = 4 jaws



**Blank (smooth) jaws**  
 - Suitable for further treatments  
 - Steel-blanks without coating



**Rubber coated jaws**  
 - 1 mm rubber coating (NBR)  
 - Nickel-plated



**Pyramid jaws (serrated)**  
 - Pyramids 1.2x45  
 - Hardened steel 58HRC  
 - Nickel-plated; °



**V-jaws**  
 - For all kinds of round samples  
 - Tooth pitch 1.2 mm  
 - Hardened steel 58HRC  
 - Nickel-plated



**Wave jaws (corrugated)**  
 - For flexible materials  
 - Wave 5 mm  
 - Hardened steel 58HRC  
 - Nickel-plated



**Diamond coated jaws**  
 - Clamping surface coated with synthetic diamonds D91 (170/200 mesh)  
 - Nickel-plated

Item number	Surface	Clamping surface H x W	Temperature range	Weight/ 1 pair
GV-T-B	Blank jaws	40 x 60mm	+20 °C - +350°C	~ 0.3kg
GV-T-BG	Rubber coated jaws	40 x 60mm	- 70 °C - +70°C	~ 0.3kg
GV-T-BP	Pyramid jaws	40 x 60mm	- 70 °C - +350°C	~ 0.3kg
GV-T-BV	V-jaws	clamping height 40mm	- 70 °C - +350°C	~ 0.3kg
GV-T-BW	Wave jaws	40 x 60mm	- 70 °C - +350°C	~ 0.3kg
GV-T-BD	Diamond coated jaws	40 x 60mm	- 70 °C - +280°C	~ 0.3kg
GV-T-B100	Blank jaws	40 x 100 mm	+20 °C - +350°C	~ 0.7kg
GV-T-BG100	Rubber coated jaws	40 x 100 mm	- 70 °C - +70°C	~ 0.7kg
GV-T-BP100	Pyramid jaws	40 x 100 mm	- 70 °C - +350°C	~ 0.7kg
GV-T-BW100	Wave jaws	40 x 100 mm	- 70 °C - +350°C	~ 0.7kg
GV-T-BD100	Diamond coated jaws	40 x 100 mm	- 70 °C - +280°C	~ 0.7kg
GV-T-BW200	Wave jaws	60 x 200 mm	0°C - +350°C	~ 3.0kg

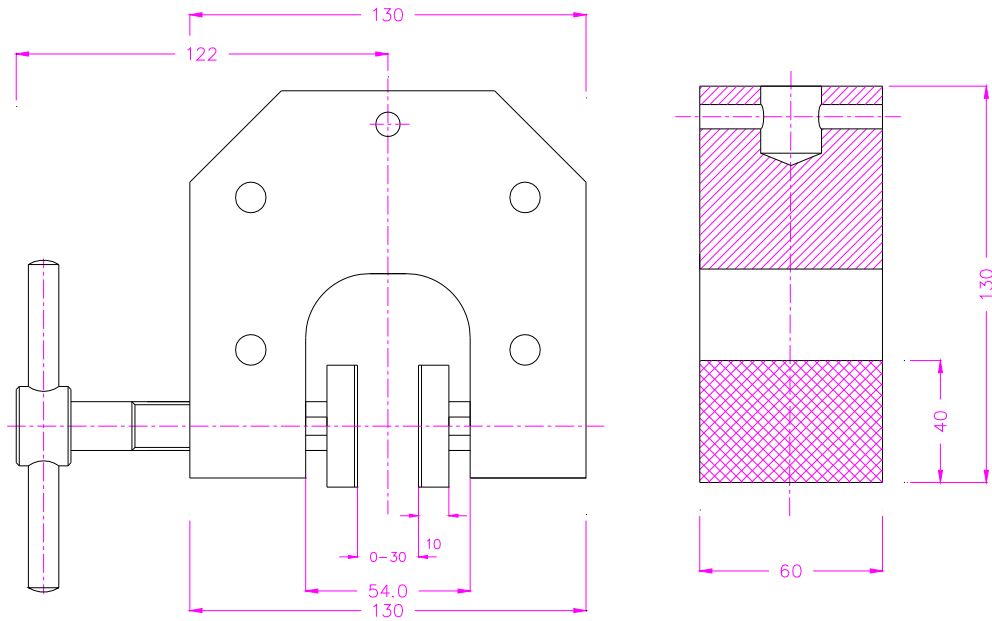
#### Inset jaws for GV-T:

Jaw quick changing system; Inset jaws require carriers (GV-T-GT..)  
 The specified opening of the grips is reduced (10mm) by using inset jaws  
 Scope of delivery: 1 Set = 4 jaws



Item number	Surface	Clamping surface H x W	Temperature range	Weight/ 1 pair
GV-T-GT	Carrier	-	- 70 °C - +350°C	~ 0.3kg
GV-T-EB	Blank inset jaws	50 x 60mm	+20 °C - +350°C	~ 0.3kg
GV-T-EBG	Rubber coated inset jaws	50 x 60mm	- 70 °C - +70°C	~ 0.3kg
GV-T-EBP	Pyramid inset jaws	50 x 60mm	- 70 °C - +350°C	~ 0.3kg
GV-T-EBW	Wave inset jaws	50 x 60mm	- 70 °C - +350°C	~ 0.3kg
GV-T-EBD	Diamond coated inset jaws	50 x 60mm	- 70 °C - +280°C	~ 0.3kg
GV-T-GT100	Carrier	-	- 70 °C - +350°C	~ 0.7kg
GV-T-EB100	Blank inset jaws	50 x 100mm	+20 °C - +350°C	~ 0.7kg
GV-T-EBG100	Rubber coated inset jaws	50 x 100mm	- 70 °C - +70°C	~ 0.7kg
GV-T-EBP100	Pyramid inset jaws	50 x 100mm	- 70 °C - +350°C	~ 0.7kg
GV-T-EBW100	Wave inset jaws	50 x 100mm	- 70 °C - +350°C	~ 0.7kg
GV-T-EBD100	Diamond coated inset jaws	50 x 100mm	- 70 °C - +280°C	~ 0.7kg

Further dimensions and surface coatings available upon request

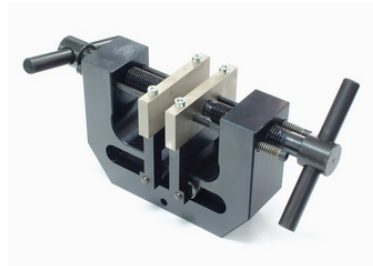


GV-T

Examples for custom built solutions:



GV-20T-Ni: Temperature range -70°C - +350°C



GV-20T-S100: Opening 100 mm