



## GV-1T

### GV-1T Vise grip

Opening: 0 - 10mm (0-8 mm with rubber jaws)  
Weight: 0.27 kg each grip (without jaws)

### GV-1T-S20 Vise grip

Opening: 0 - 20mm (0-18 mm with rubber jaws)  
Weight: 0.32 kg each grip (without jaws)

### GV-1T-S30 Vise grip

Opening: 0 - 30mm (0-28 mm with rubber jaws)  
Weight: 0.32 kg each grip (without jaws)

### GV-1T-S50 Vise grip

Opening: 0 - 50mm (0-48 mm with rubber jaws)  
Weight: 0.57kg each grip (without jaws)

- Tensile force: 1 kN
- Temperature range: 0°C - +70°C (depending on jaws)  
Other temperature ranges available on request
- Body: Anodized aluminium
- Scope of delivery: 1 pair (without jaws)
- Pneumatic version also available (see data sheet [GP-1T](#))



**Jaws for GV-1T:** Scope of delivery 1 Set = 4 jaws

Item number	Surface	Clamping surface H x W	Weight/pair
GV-1T-B	Blank jaws	30 x 30mm	0.13 kg
GV-1T-BG	Rubber jaws	30 x 30mm	0.13 kg
GV-1T-BP	Pyramid jaws	30 x 30mm	0.12 kg
GV-1T-BV2	V-jaws	30 x 30mm	0.12 kg
GV-1T-BV3	V-jaws	30 x 30mm	0.13 kg
GV-1T-BW	Wave jaws	30 x 30mm	0.13 kg
GV-1T-BD	Diamond jaws	30 x 30mm	0.13 kg
GV-1T-BLC	Line-contact jaws	30 x 30mm	0.13 kg
GV-1T-B50	Blank jaws	30 x 50mm	0.22 kg
GV-1T-BG50	Rubber jaws	30 x 50mm	0.23 kg
GV-1T-BP50	Pyramid jaws	30 x 50mm	0.21 kg
GV-1T-BW50	Wave jaws	30 x 50mm	0.20 kg
GV-1T-BD50	Diamond jaws	30 x 50mm	0.22 kg
GV-1T-B80	Blank jaws	30 x 80mm	0.36 kg
GV-1T-BG80	Rubber jaws	30 x 80mm	0.37 kg
GV-1T-BP80	Pyramid jaws	30 x 80mm	0.35 kg
GV-1T-BW80	Wave jaws	30 x 80mm	0.32 kg
GV-1T-BD80	Diamond jaws	30 x 80mm	0.36 kg
GV-1T-B100	Blank jaws	30 x 100mm	0.45 kg
GV-1T-BG100	Rubber jaws	30 x 100mm	0.46 kg
GV-1T-BP100	Pyramid jaws	30 x 100mm	0.45 kg
GV-1T-BW100*	Wave jaws	30 x 100mm	0.51 kg
GV-1T-BD100	Diamond jaws	30 x 100mm	0.45 kg

\*\* Opening is reduced by 4 mm

Jaws with other dimensions and surface coatings on request

### V-jaws

BV3 jaws are preferable for samples with a larger diameter, clamping height 30 mm

	GV-1T	GV-1T-S20	GV-1T-S30	GV-1T-S50
GV-1T-BV2	Ø 2 - 9 mm	Ø 2- 20 mm	Ø 2- 30 mm	Ø 2 - 50 mm
GV-1T-BV3	Ø 3 - 9 mm	Ø 3 - 20 mm	Ø 3 - 30 mm	Ø 3 - 50 mm

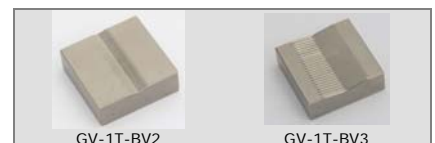
**Inset jaws for GV-1T:** Scope of delivery 1 Set = 4 jaws

For a quick change of jaws, inset jaws require carriers (GV-1T-GT)  
Blank, pyramid, diamond inset jaws reduce opening by 2mm, rubber inserts by 4mm

Item number	Surface	Clamping surface H x W	Weight Per pair
GV-1T-GT	Carrier	-	0.09 kg
GV-1T-EB	Blank Inset jaws	30 x 30mm	0.05 kg
GV-1T-EBG	Rubber Inset jaws	30 x 30mm	0.06 kg
GV-1T-EBP	Pyramid Inset jaws	30 x 30mm	0.05 kg
GV-1T-EBD	Diamond Inset jaws	30 x 30mm	0.05 kg

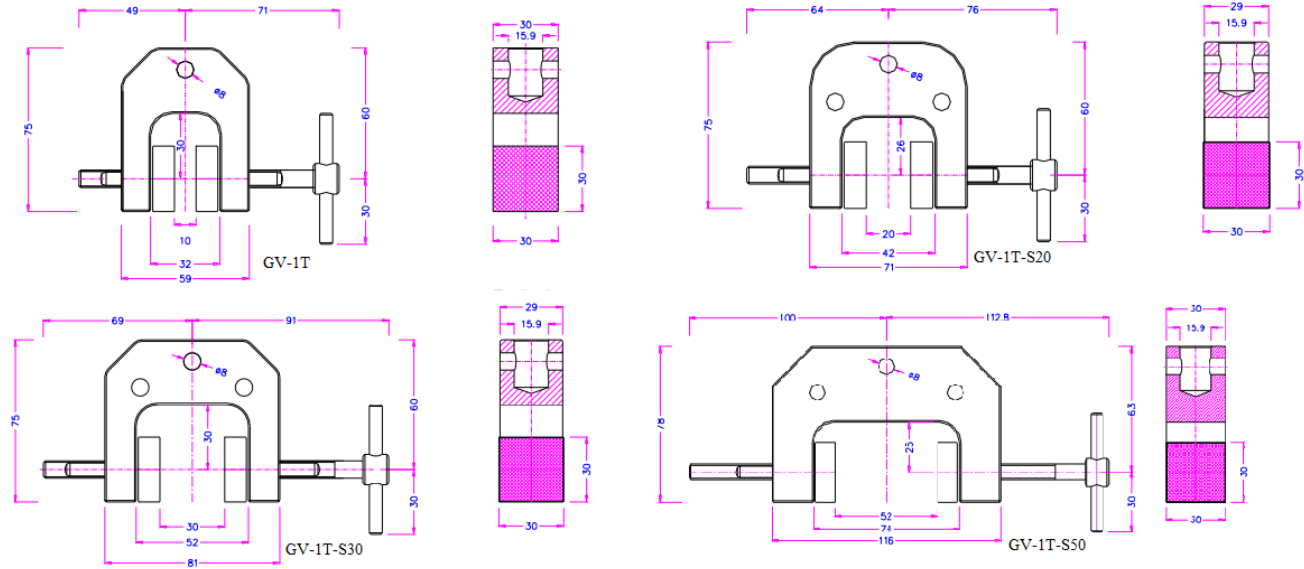
Inset jaws with other dimensions and surface coatings on request

	<b>Blank jaws</b> - Applicable for own further treatments - Steel-blanks without coating
	<b>Rubber jaws</b> - 1mm rubber coating (NBR) - Nickel plated
	<b>Pyramid jaws</b> - Pyramids 1.2x45° - Hardened steel 58 HRC - Nickel plated
	<b>V-jaws</b> - For all kinds of round samples - Tooth pitch 1.2 mm - Hardened steel 58HRC - Nickel plated
	<b>Wave jaws</b> - For flexible materials - Wave 5 mm - Hardened steel 58HRC - Nickel plated
	<b>Diamond jaws</b> - Clamping surface coated with synthetic diamonds D91 (170/200 mesh) - Nickel plated
	<b>Line-contact jaws</b> - Radius: 3mm - Nickel plated





## GV-1T



### Stainless Steel Version:

For use in environmental chambers

Item number	<b>GV-1T-A4</b>
Tensile force	1 kN
Jaw opening	0-10 mm depending on jaw type
Standard coupling*	15.9 mm female eye end
Body	Stainless steel A4 (AISI316)
Jaws	Stainless steel A4 (AISI316)
Standard temperature range	-60 ... +280°C depending on jaws
Weight per grip without jaws	0.63 kg
Scope of supply	1 pair of grips without jaws

\*Adapters available upon request



**Jaws for GV-1T-A4:** Scope of delivery 1 Set = 4 jaws

Item number	Surface	Clamping surface	Opening	Weight/pair
GV-1T-B-A4	Blank jaws	30 x 30mm	0 – 10mm	0.13 kg
GV-1T-BG-A4	Rubber jaws	30 x 30mm	0- 8 mm	0.13 kg
GV-1T-BP-A4	Pyramid jaws	30 x 30mm	0 – 10 mm	0.12 kg
GV-1T-BV2-A4	V-jaws	30 x 30mm	Ø 2 – 9 mm	0.12 kg
GV-1T-BV3-A4	V-jaws	30 x 30mm	Ø 3 – 9 mm	0.13 kg
GV-1T-BW-A4	Wave jaws	30 x 30mm	0 – 10 mm	0.13 kg
GV-1T-BD-A4	Diamond jaws	30 x 30mm	0 – 10 mm	0.13 kg



#### Blank jaws

- Applicable for own further treatments
- Steel-blanks without coating



#### Pyramid jaws

- Pyramids 1.2x45°
- Hardened steel 58 HRC
- Nickel-plated



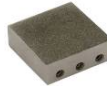
#### Wave jaws

- For flexible materials
- Wave 5 mm
- Hardened steel 58HRC
- Nickel-plated



#### Rubber jaws

- 1 mm rubber coating (NBR)
- Nickel-plated



#### Diamond jaws

- Clamping surface coated with synthetic diamonds D91 (170/200 mesh)
- Nickel-plated



#### Line-contact jaws

- Radius 3
- Nickel-plated

### GP-1T Pneumatic Versions:



GP-1T-S30

GP-1T+ko with GV-1T+BP pyramid jaws



GP-1T-S50

GP-1T-S20+2ko with GV-1T+EBP pyramid inset jaws