



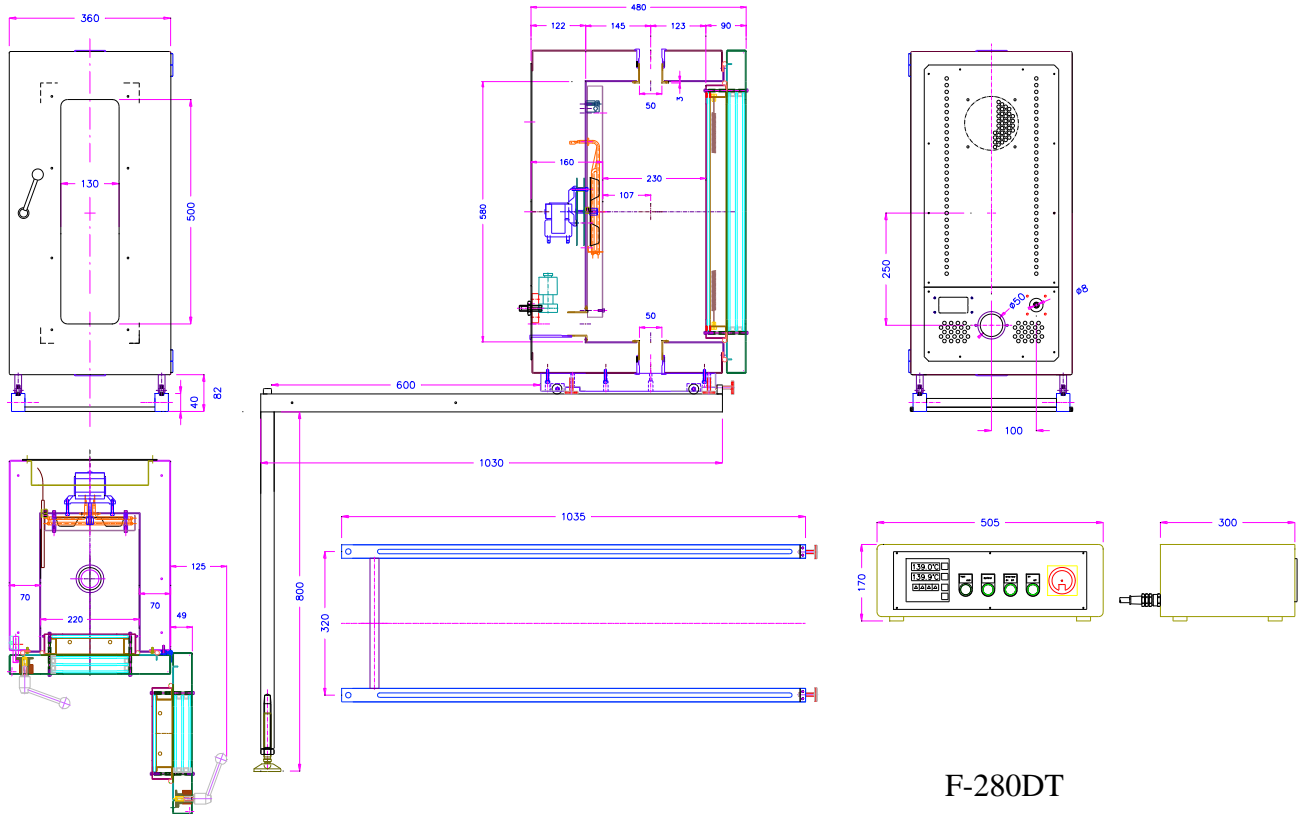
Environmental Chambers for Universal Testing Machines

ADMET offers standard and custom environmental chambers to be used with universal testing machines. Environmental chambers come with an Omron temperature controller and can also be set up with the MTESTQuattro controller.

Environmental chambers can be equipped with ADMET high or low temperature grips and fixtures.



Item No.	F-280DT
• Temperature range	-80°C up to +280°C or up to +350°C Further temperature ranges available on request
• Body	Stainless steel
• Internal dimensions (w x d x h)	220 x 220 x 580mm (8.6 x 8.6 x 22.8 in)
• External dimensions (w x d x h)	360 x 480 x 760mm (14.2 x 18.9 x 29.9 in)
• Heating power	2.3 kW (220 Volt)
• Front door viewport	4 glass layers with heating coils to remove ice Optional interior light mounted on the door
• Window dimensions (w x h)	130 x 500mm (5.1 x 19.7 in)
• Standard cooling	LN2 cooling module
• Scope of delivery	1 chamber with Omron controller Includes slide rails and slide locks to move the chamber into and out of the UTM frame



F-280DT