

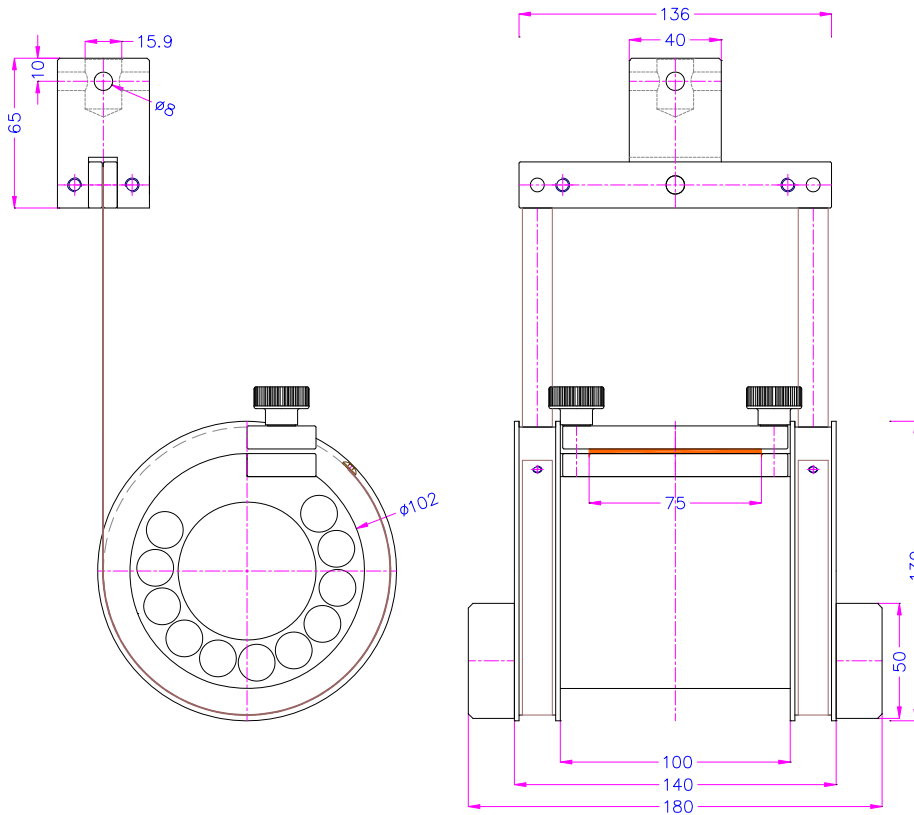
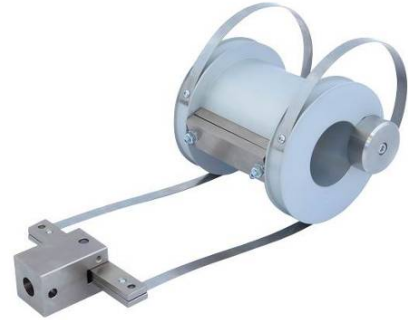
CLIMBING DRUM PEEL TEST FIXTURE

Climbing drum peel test fixture to determine the peel resistance of adhesive bonds between a relatively flexible adherent and a rigid adherent; and the relatively flexible facing of a sandwich structure and its core per ASTM D1781

EN 2243-3 and DIN 53295 designs also available (see Page 2)

The fixture consists of a flanged drum, flexible loading straps connected to the adapter, and clamps for holding the test specimen against the face of the drum.

- Max. load: 5 kN
- Standard adapter: 15.9mm (5/8in) female eye ends
Adapters available on request
- Material: Aluminium (drum), steel (assembly)
- Temperature range: 0 ... +70°C
Further temperature ranges available on request
- Drum diameter: 102mm
- Specimen width: 25 mm (1 in.) for laminated assemblies
76 mm (3 in.) for sandwich constructions
- Specimen length: Min. 254 mm (10 in.) for laminated assemblies
Min. 305 mm (12 in.) for sandwich constructions
- Weight: 3.5 kg
- Scope of delivery: 1 fixture.
Upper grip is not included.



FS-CDT-ASTM D1781

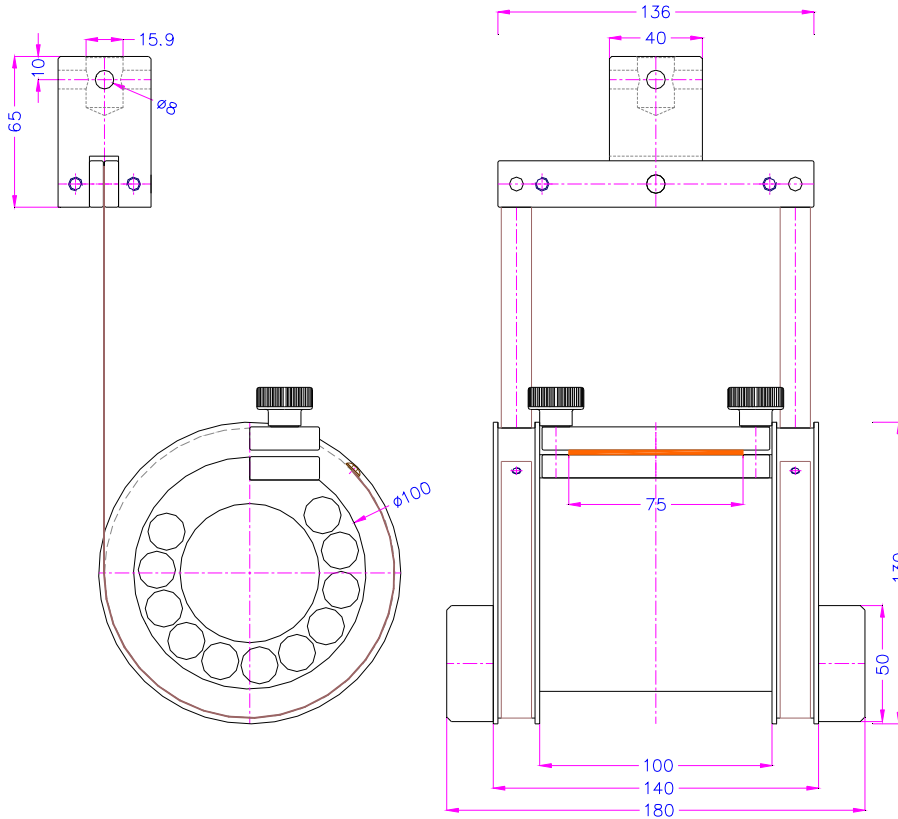
Item no.: EN2243-3-100
DIN53295-100

Climbing drum peel test fixture to determine the peel resistance of adhesive bonds in honeycomb core sandwich constructions according to EN 2243-3 and DIN 53295.

Drum diameter: 100 mm

Sample width: 75 mm

Sample length: 300 mm



FS-CDT-EN2243-3/DIN53295

Optional accessories:



Adjustable table – For setting the test up and starting the test