

Gauge Buster 2 Ordering Guide



Step 1: Choose your base model



Gauge Buster 2 Standard

Part #1120-00002

Enclosure Dimensions: 8.5" x 3" x 9.25"



Gauge Buster 2 Portable

Part #1120-00014

Comes with Pelican 1200 Case

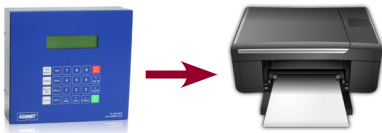


Gauge Buster 2 Compact

Part #1120-00062

Enclosure Dimensions: 6.25" x 2.5" x 7.75"

Step 2: Choose your options



Add-on: Printer Port

Part #1121-00005

Print directly from the Gauge Buster 2 with USB PCL5 compatible printer



Add-on: USB Flash Drive Port

Part #1121-00006

Save test results, logged XY data, test method settings, and calibration tables directly to a flash drive



Add-on: Recorder

Part #1121-00007

For use with kneading compactors. User selectable sample rate from 0.2 Hz to 1,000 Hz



Calibration: Load Only Mode

Part #1121-00008

For calibrating load transducers; includes freeze cable. Compatible with Portable and Mini options only



Calibration Plus: Load, Position, Speed, and Time

Part #1121-00009

For calibrating load transducers, extensometers, crosshead displacement, and crosshead speed; includes freeze cable. Compatible with Portable and Mini options only



Step 3: Add optional channels

Auxiliary (Encoder) Channel

Part #1121-00001

For transverse strain measurement; calculates ASTM C469 Poisson's Ratio when used with GaugeSafe Plus or Live software

Strain (Analog) Channel

Part #1121-00002

For axial strain measurements; calculates ASTM C469 Modulus of Elasticity when used with GaugeSafe Plus or Live software

MegaForce Control Option

Part #1121-00004

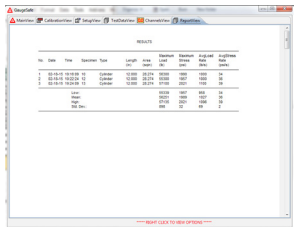
Enables Gauge Buster 2 to control MegaForce Systems and compression machines at the programmed load rates

Note: these channel options are incompatible with Calibration Add-on (Part #1121-00008) and Calibration Plus Add-on (Part #1121-00009)



MegaForce concrete tester with Gauge Buster 2 indicator

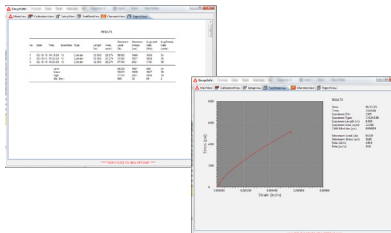
Step 4: Add optional software



GaugeSafe Basic

Provides numerical test results

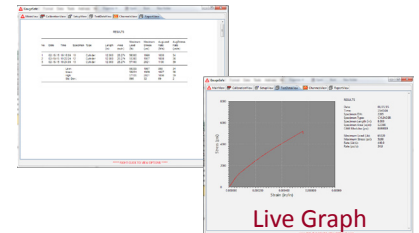
Part #1420-00001



GaugeSafe Plus

Test results include numerical values and graph after the test

Parts #1420-00002



GaugeSafe Live

Functionality of GaugeSafe Plus with a live graph during test

Part #1420-00003

For Recorder Unit:

GaugeSafe Recorder

Part #1420-00009

For Calibration Units:

GaugeSafe Calibration

Part #1420-00010



51 Morgan Drive Norwood, MA 02062
Tel: (781) 769-0850 Fax: (781) 769-0884
Sales@ADMET.com www.ADMET.com