



GP-2.4T

GP-2.4T Pneumatic Grip 2.4 kN

Symmetric clamping. Dual-action for self centering of the specimen which allows its quick and easy loading.

Each grip is supplied with a specimen alignment device, mounted directly on the jaws.

Grips are supplied with two rods for 0 – 7mm and 4 to 11mm opening. See jaw selection tables below for further information.

Ordering information

GP-2.4T are supplied in pairs, but can also be ordered as a single grip (0.5 qty.)
Jaw faces need to be ordered separately.

GP-2.4T



GP-2.4T + TH205 (optional)

Item number	GP-2.4T
Clamping force	2.4 kN at 7 bar – Max 5.4kN at 16 bar
Temperature range	0°C - +70°C Other temperature ranges on request
Body	Aluminium, anodized
Pneumatic connection	Internal thread coupling 1/8"
Weight	1.21kg per grip (without jaws)

Jaws for GP-2.4T: Scope of delivery 1 set = 4 jaws

Item No.	Surface	Clamping surface H x W	Opening with Z7 rods	Opening with Z11 rods	Weight per pair
GP-2.4T-B	Blank jaws	30 x 50mm	0 – 7mm	4 – 11mm	0.22kg
GP-2.4T-BG	Rubber jaws	30 x 50mm	0 – 5mm	2 – 9mm	0.22kg
GP-2.4T-BP	Pyramid jaws	30 x 50mm	0 – 7mm	4 – 11mm	0.22kg
GP-2.4T-BV	V-jaws	30 mm height	4 – 7mm Ø	7 – 11mm Ø	0.18kg
GP-2.4T-BW	Wave jaws	30 x 50mm	0 – 7mm	4 – 11mm	0.20kg
GP-2.4T-BD	Diamond jaws	30 x 50mm	0 – 7mm	4 – 11mm	0.22kg

* Both Z7 and Z11 rods are included in the scope of delivery

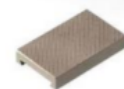
Inset jaws for GP-2.4T:

Jaw quick changing system
Inset jaws require carriers (GP-2.4T-GT)
Scope of delivery: 1 Set = 4 jaws

	Blank jaws <ul style="list-style-type: none">• Suitable for own further treatments• Steel-blanks without coating
	Rubber jaws <ul style="list-style-type: none">• 1 mm rubber coating (NBR)• Nickel-plated
	Pyramid jaws <ul style="list-style-type: none">• Pyramids 1.2x45• Hardened steel 58HRC• Nickel-plated
	V-jaws <ul style="list-style-type: none">• For all kinds of round samples• Tooth pitch 1.2 mm• Hardened steel 58HRC• Nickel-plated
	Wave jaws <ul style="list-style-type: none">• For flexible materials• Wave 5 mm• Hardened steel 58HRC• Nickel-plated
	Diamond jaws <ul style="list-style-type: none">• Clamping surface coated with synthetic diamonds• Nickel-plated



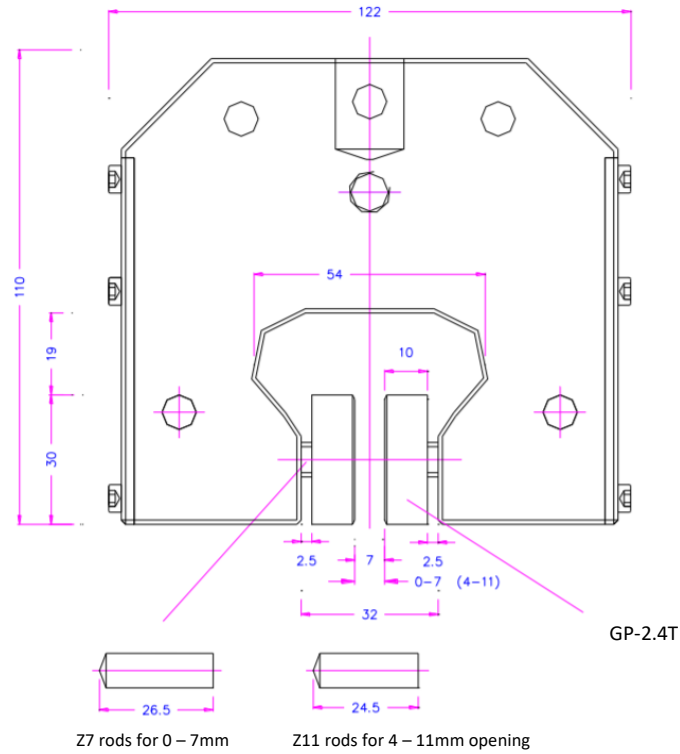
GP-2.4T-GT



GP-2.4T-EBP

Item number	Surface	Clamping surface H x W	Opening with Z7 rods*	Opening with Z11 rods*	Weight/ 1 pair
GP-2.4T-GT	Carrier	-	-	-	0.12 kg
GP-2.4T-EB	Blank inset jaws	30 x 50mm	0 - 5mm	4 - 9mm	0.14 kg
GP-2.4T-EBG	Rubber coated inset jaws	30 x 50mm	0 - 3mm	2 - 7mm	0.14 kg
GP-2.4T-EBP	Pyramid inset jaws	30 x 50mm	0 - 5mm	4 - 9mm	0.13 kg
GP-2.4T-BV	V-Jaws	30mm height	3 - 5mm Ø	4 - 9mm Ø	0.13 kg
GP-2.4T-EBW	Wave inset jaws	30 x 50mm	0 - 5mm	4 - 9mm	0.12 kg
GP-2.4T-EBD	Diamond coated inset jaws	30 x 50mm	0 - 5mm	4 - 9mm	0.14 kg
GP-2.4T-GT100	Carrier	-	-	-	0.69 kg
GP-2.4T-EB100	Blank inset jaws	30 x 100mm	0 - 2mm	0 - 6mm	0.37 kg
GP-2.4T-EBG100	Rubber coated inset jaws	30 x 100mm	0 - 2mm	0 - 6mm	0.38 kg
GP-2.4T-EBP100	Pyramid inset jaws	30 x 100mm	0 - 2mm	0 - 6mm	0.35 kg
GP-2.4T-EBW100	Wave inset jaws	30 x 100mm	0 - 2mm	0 - 6mm	0.34 kg
GP-2.4T-EBD100	Diamond coated inset jaws	30 x 100mm	0 - 2mm	0 - 6mm	0.38 kg

* Both Z7 and Z11 rods are included in the scope of delivery



Examples for special requirements solutions



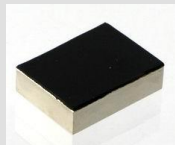
GP-2.4T+V+2R



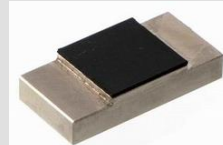
GP-2.4T+V+2R



GP-2.4T-BG20x50
Height 20 mm x Width 50 mm



GP-2.4T-BG30x40
Height 30 mm x Width 40mm



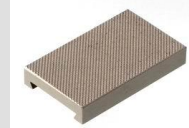
GP-2.4T-BG25x25
Height x Width 25 mm



GP-2.4T-BP30x25-0.7x45
Height 30mm x Width 200 mm – small pyramids 0.7x45



GP-2.4T-GT
Inset jaws carrier



GP-2.4T-EBP
Pyramid inset jaws

Accessories:



TH205-1

2 pneumatic foot switches, tubes and fittings

None locking: The jaws of the grip open by pressing the foot pedal and close after removing the foot from the pedal.

Scope of delivery: 1 pair of foot switches including tubes and fittings



TH205-2

2 pneumatic foot switches, tubes and fittings

With locking function: The jaws of the grip open by pressing the foot pedal and remain opened after removing the foot from the pedal. The jaws close by pressing the pedal one more time.

Scope of delivery: 1 pair of foot switches including tubes and fittings



TH205-.+PR

Optional for TH205-1 or TH205-2

Pressure regulator

To adjust air pressure: 1-10 bar



TH205-3

1 unit of pneumatic hand switches, tubes and fittings

With locking function: Handle with 2 positions. The jaws of the grip close by pulling the handle and remain closed. The jaws open by pushing the handle back.

Scope of delivery: 1 unit of hand switches including tubes and fittings



TH205-4

Pneumatic micro - hand switches, tubes and fittings

With locking function: The hand switches are directly installed at the grips (only for 1/8" couplings), 3/2 directional valve

Scope of supply: 2 hand switches including tubes and fittings



TH216

Silent compressor appropriate for laboratories

Max pressure: 16 bar; noise level: 45dB(A)

Motor 400 Watt; displacement 25 l/min

With pressure reducer / water trap

Dimensions: 280x190x240 mm (L x W x H); weight ~ 14 kg