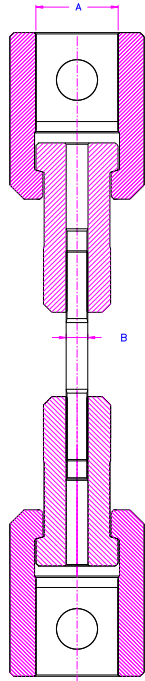


## Thread Head Grip

Standard grip for testing threaded fasteners such as screws, bolts, and studs.

### Testing of full threaded studs



TH-A-EB



TH-318-EM12  
Standard threaded insert form  
for all insert sizes except of TH-60-Ex



TH-60-SGM12  
TH-60-Ex threaded inserts for all thread sizes  
up to M20 are supplied in the special SGM form

Insert holder Model number	A: Coupling (Female eye ends)	Threaded insert Model number	B: Thread Ø	Force capacity
TH-159	15.9 mm	TH-159-Ex*	3 – 8 mm	20 kN
TH-20	20 mm	TH-159-Ex*	3 – 8 mm	20 kN
TH-30	30 mm	TH-30-Ex	3 – 16 mm	50 kN
TH-318	31.8 mm	TH-318-Ex*	3 – 16 mm	50 kN
TH-32	32 mm	TH-318-Ex*	3 – 16 mm	50 kN
TH-36	36 mm	TH-318-Ex*	3 – 16 mm	50 kN
TH-38	38 mm	TH-318-Ex*	3 – 16 mm	50 kN
TH-40	40 mm	TH-40-Ex	3 – 22 mm	100 kN
TH-50	50 mm	TH-50-Ex	3 – 22 mm	200 kN
TH-60	60 mm	TH-60-Ex	3 – 28 mm	250 kN
TH-70	70 mm	TH-70-Ex	3 – 32 mm	400 kN

\*Inserts for TH-159+20 and TH-318 till 38 are identical

### Ordering information

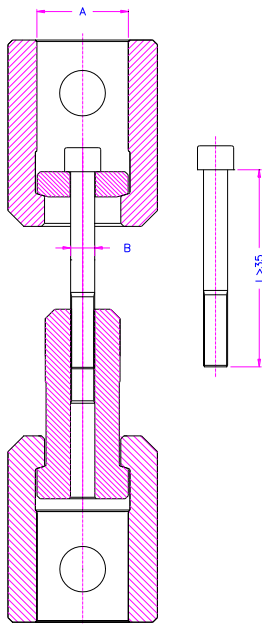
TH holders and inserts are supplied as a pair, but can also be ordered separately (0.5 pair).

**Testing of long cap screws**

Item no.:

**TH-A-EPB**

A = coupling size  
B = thread Ø, according to customer requirements



Washer

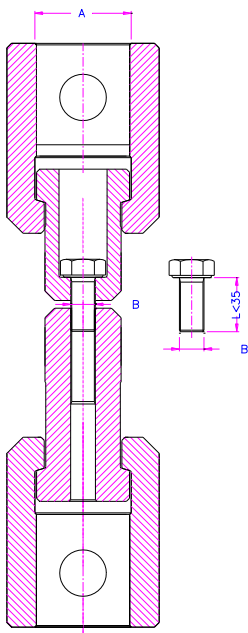
TH-A-EPB

**Testing of short cap screws**

Item no.:

**TH-A-EKB**

A = coupling size  
B = thread Ø, according to customer requirements



Insert

TH-A-EKB

**Appendix- Weight Information**



**TH Holder and Insert Weights:**

Insert holder	Weight
TH-159	83 g
TH-20	108 g
TH-30	490 g
TH-318	570 g
TH-32	554 g
TH-3618	710 g
TH-38	693 g
TH-40	820 g
TH-50	1857 g
TH-60	4375 g

Threaded inserts for TH-159	Weight
TH-159-EM3	30 g
TH-159-EM4	28 g
TH-159-EM5	27 g
TH-159-EM6	24 g
TH-159-EM8	22 g
TH-159-EM10	16 g

Threaded inserts for TH-318	Weight
TH-318-EM3	245 g
TH-318-EM4	245 g
TH-318-EM5	245 g
TH-318-EM6	245 g
TH-318-EM8	245 g
TH-318-EM10	235 g
TH-318-EM12	215 g
TH-318-EM14x2	200 g
TH-318-EM16	175 g
TH-318-E1/4	252 g
TH-318-E5/8	175 g

Threaded inserts for TH-50	Weight
TH-50-EM5	860 g
TH-50-EM6	845 g
TH-50-EM8	842 g
TH-50-EM10	833 g
TH-50-EM12	814 g
TH-50-EM14	731 g
TH-50-EM16	760 g
TH-50-EM18	788 g
TH-50-EM20	690 g

Threaded inserts for TH-60	Weight
TH-60-EM20	1554 g
TH-60-EM24	1500 g