

Gauge Buster 3 Digital Indicator



Gauge Buster 3 is ADMET's third generation American engineered and made digital indicator for determining the mechanical properties of materials in tension, compression or flexure. GB3 has the versatility to perform a wide variety of material and product tests plus the accuracy to be paired with a load cell and used as a calibration standard. It is offered in a compact rugged enclosure (6.4"Hx7.9"Wx3.7"D) and includes features unique to the Gauge Buster family such as Auto-Test-Reset mode for hands free operation, bar graph load rate display, permanent storage of test data and easy transfer of results into database programs. Its accuracy, which exceeds ASTM E4, ease-of-use and ruggedness result in a system of unrivaled price/performance.

Install Gauge Buster 3 on your testing machine with one of our mounting packages, connect a pressure transducer or load cell and measure the strength of your materials in tension, compression, or bend.

Features

- Display Live Load, Maximum Load, Live Stress and Maximum Stress numerically.
- Indicate Load/Stress Rate numerically or with a bar graph. The bar graph rate pointer moves between limits. Adjust the upper and lower rate limits depending on the testing requirements. Ex: ASTM C39 28-42 psi/sec.
- Activate average load rate analysis to calculate and report actual test speeds.
- Select between force units of lbf, N, kN, kg and stress units of psi, MPa, KPa, ksc.
- Define specimen geometries as cylinder, cube, beam center point loading, beam-3rd point loading, round and general area.
- Activate/De-Activate Cylinder ASTM C39 correction factor.
- Define cylinder break type according to ASTM C39.
- Perform beam tests according to ASTM C78 and C293.
- Store up to 2,000 test results to permanent memory. Results include Date, Time, Specimen ID#, Maximum Load, Maximum Stress, Average Load Rate plus a statistical summary of each.
- Additional test information fields and calculations which the operator can activate and include with the results are: Operator ID#, Specimen Weight, Specimen Age and Cylinder Cap Type and Yield by Halt of the Pointer calculation.
- Pair a barcode reader (option) with the GB3 and accurately and effortlessly enter the Specimen ID# prior to each test.
- Store up to 6 test methods to permanent memory. Test methods enable the user to define and store cylinder, beam and cube test procedures to memory. With the press of a key they can be quickly recalled for efficient testing.
- Activate Auto-Store to automatically store the results of each test.
- Auto-Test-Reset is standard and automatically enables the indicator for the start of the next test without requiring operator interaction.
- Define and detect the end of test with the Sample Break Detector. Use the GB3 digital output to turn the testing machine pump motor off at sample break.
- Transmit via USB port XY data, test results and calibration data to a remote computer running ADMET's optional GaugeSafe software.
- Automatically transmit at the end of each test via the GB3 RS232 serial port test results or recorded XY data.
- An optional position channel can be purchased to measure displacement/deflection/extension.

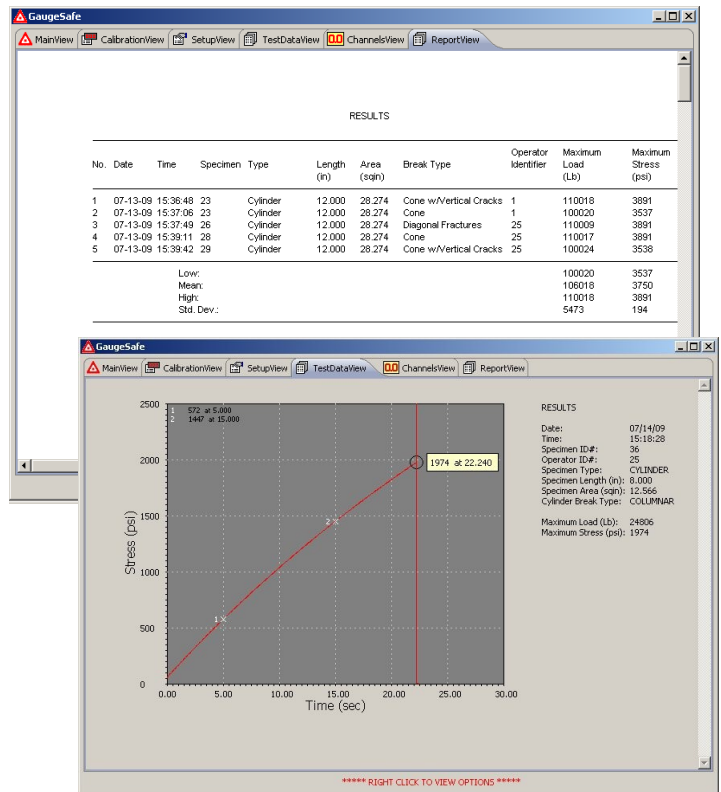
Improvements

- Increased log data buffer size from 15,000 to 20,000 data points per channel.
- Certify your testing machine to lower ASTM E4 force values with the GB3's lower noise analog front end and digital filter.

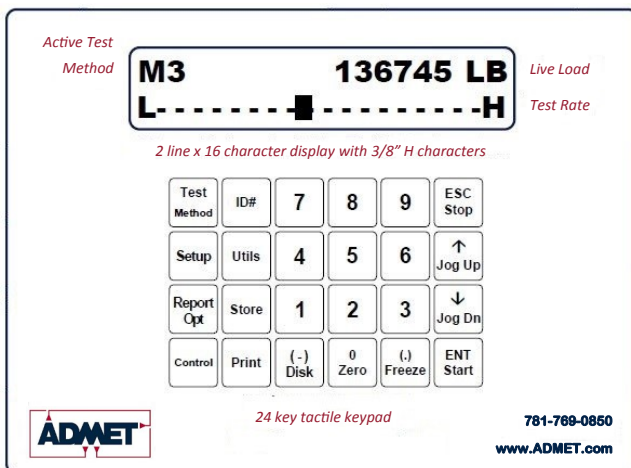
Gauge Buster 3 Digital Indicator

Gauge Buster 3 Options and Accessories

- **GaugeSafe Data Exchange Software** - PC Windows based software program. Users transmit via the GB3 USB port XY data, results and calibration data to a remote computer running GaugeSafe. View or print recorded data and results from your pc. Export recorded XY data and test results to CSV files for import into spreadsheet and database programs. Transfer transducer calibration data to GaugeSafe, store calibration data to file for archiving. Upload saved calibration files to the Gauge Buster 3 via GaugeSafe.
- **Quadrature Encoder Channel** - Typically used with a linear or rotary encoder to measure displacement, deflection or strain. Live displacement and displacement rates can be viewed on the GB3 display. The recorded displacement data can also be transmitted real-time or post test to GaugeSafe for viewing or printing of force vs. displacement or displacement vs. time plots.
- **Rechargeable Battery Pack** - A rechargeable battery pack mounted inside the GB3 enclosure allows up to 20 hours of continuous operation between charges. Charging and fully charged indicator LEDs plus a power chord for charging are included.
- **Pressure Transducers** - 1,000 2,000 3,000 5,000 10,000 psi capacities with prewired cable.
- **Load Cells** - A wide range of capacities and sizes offered.
- **GB3 Mounting Brackets** - Quickly and securely fix the GB3 to your testing machine.
- **RS232 Transmit Cable**
- **Barcode Reader** - Quickly and without error enter the Specimen ID# prior to each test.



GaugeSafe Test Results and XY Plot Views



Load Input Compatibility

Sensitivity	User selectable from 1mV/V to +/- 10Vdc
Excitation	5Vdc
Resolution	1 part in 8 million (approx.)
Acquisition Rate	4.1kHz
Data Log Rate	Up to 1kHz

Quadrature Encoder Input Compatibility (Optional)

Excitation	5Vdc
Maximum Input Frequency	

Size

Dimensions	6.4" H x 7.9" W x 3.7" D
High Contrast LCD	2 line x 16 char x 0.4" h alphanumeric
Keypad	24-Key with Tactile Keys

Power Requirements

Voltage	100-240 VAC 50-60 Hz
	Rechargeable battery pack (optional)



51 Morgan Drive, Norwood, MA 02062
 t: 781-769-0850 f: 781-769-0884
 sales@admet.com www.admet.com

800-667-3220